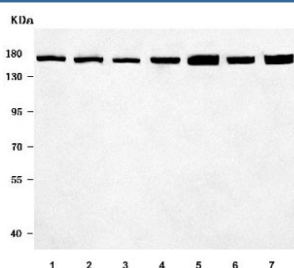


## ROCK1 Antibody / Rho-associated protein kinase 1 (RQ7871)

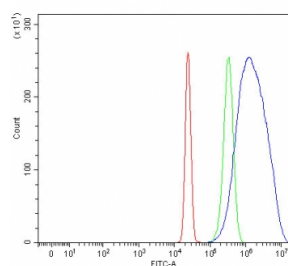
Catalog No.	Formulation	Size
RQ7871	0.5mg/ml if reconstituted with 0.2ml sterile DI water	100 ug

**Bulk quote request**

<b>Availability</b>	1-3 business days
<b>Species Reactivity</b>	Human, Mouse, Rat
<b>Format</b>	Antigen affinity purified
<b>Clonality</b>	Polyclonal (rabbit origin)
<b>Isotype</b>	Rabbit IgG
<b>Purity</b>	Antigen affinity purified
<b>Buffer</b>	Lyophilized from 1X PBS with 2% Trehalose
<b>UniProt</b>	Q13464
<b>Applications</b>	Western Blot : 0.5-1ug/ml Flow Cytometry : 1-3ug/million cells Direct ELISA : 0.1-0.5ug/ml
<b>Limitations</b>	This ROCK1 antibody is available for research use only.



Western blot testing of 1) human MOLT4, 2) human Daudi, 3) human placenta, 4) rat brain, 5) rat C6, 6) mouse brain and 7) mouse NIH 3T3 cell lysate with ROCK1 antibody. Predicted molecular weight ~158 kDa.



Flow cytometry testing of human HepG2 cells with ROCK1 antibody at 1ug/million cells (blocked with goat sera); Red=cells alone, Green=isotype control, Blue= ROCK1 antibody.

## Description

This gene encodes a protein serine/threonine kinase that is activated when bound to the GTP-bound form of Rho. The small GTPase Rho regulates formation of focal adhesions and stress fibers of fibroblasts, as well as adhesion and aggregation of platelets and lymphocytes by shuttling between the inactive GDP-bound form and the active GTP-bound form. Rho is also essential in cytokinesis and plays a role in transcriptional activation by serum response factor. This protein, a downstream effector of Rho, phosphorylates and activates LIM kinase, which in turn, phosphorylates cofilin, inhibiting its actin-depolymerizing activity. A pseudogene, related to this gene, is also located on chromosome 18.

## Application Notes

Optimal dilution of the ROCK1 antibody should be determined by the researcher.

## Immunogen

E. coli-derived recombinant human protein (amino acids K601-N1319) was used as the immunogen for the ROCK1 antibody.

## Storage

After reconstitution, the ROCK1 antibody can be stored for up to one month at 4°C. For long-term, aliquot and store at -20°C. Avoid repeated freezing and thawing.