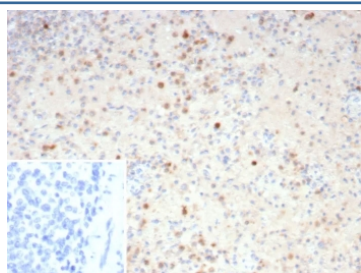


Resistin Antibody / RETN [clone RETN/4325] (V5621)

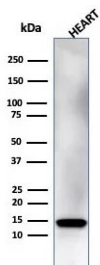
Catalog No.	Formulation	Size
V5621-100UG	0.2 mg/ml in 1X PBS with 0.1 mg/ml BSA (US sourced), 0.05% sodium azide	100 ug
V5621-20UG	0.2 mg/ml in 1X PBS with 0.1 mg/ml BSA (US sourced), 0.05% sodium azide	20 ug
V5621SAF-100UG	1 mg/ml in 1X PBS; BSA free, sodium azide free	100 ug

[Bulk quote request](#)

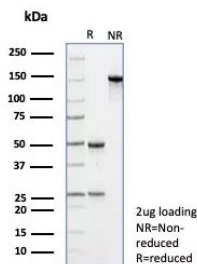
Availability	1-3 business days
Species Reactivity	Human
Format	Purified
Clonality	Monoclonal (mouse origin)
Isotype	Mouse IgG2, lambda
Clone Name	RETN/4325
Purity	Protein A/G affinity
UniProt	Q9HD89
Localization	Secreted
Applications	Immunohistochemistry (FFPE) : 1-2ug/ml Western Blot : 2-4ug/ml
Limitations	This Resistin antibody is available for research use only.



IHC staining of FFPE human spleen tissue with Resistin antibody (clone RETN/4325). Inset: PBS used in place of primary Ab (secondary Ab negative control). HIER: boil tissue sections in pH 9 10mM Tris with 1mM EDTA for 20 min and allow to cool before testing.



Western blot analysis of human heart tissue lysate using Resistin antibody (clone RETN/4325). Predicted molecular weight ~11 kDa.



SDS-PAGE analysis of purified, BSA-free Resistin antibody (clone RETN/4325) as confirmation of integrity and purity.

Description

The cysteine-rich, adipose tissue-specific, secretory factor resistin (resistance to Insulin) also known as ADSF, is a secreted hormone that potentially links obesity to diabetes. Resistin is rich in serine and cysteine residues and contains a unique cysteine repeat motif. Resistin and the resistin-like molecules share the characteristic cysteine composition and other signature features. Resistin-like alpha is a secreted protein that has restricted tissue distribution and is most highly expressed in adipose tissue. Another family member, resistin-like beta, is a secreted protein expressed only in the gastrointestinal tract, particularly in the colon, in both mouse and human. Resistin-like beta expression is highest in proliferative epithelial cells and is markedly increased in tumors, suggesting a role in intestinal proliferation.

Application Notes

Optimal dilution of the Resistin antibody should be determined by the researcher.

Immunogen

A recombinant fragment of human RETN protein (within amino acids 19-108) was used as the immunogen for the Resistin antibody.

Storage

Aliquot the Resistin antibody and store frozen at -20°C or colder. Avoid repeated freeze-thaw cycles.