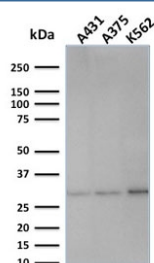


Replication Protein A2 Antibody / RPA32 [clone SPM316] (V8066)

Catalog No.	Formulation	Size
V8066-100UG	0.2 mg/ml in 1X PBS with 0.1 mg/ml BSA (US sourced) and 0.05% sodium azide	100 ug
V8066-20UG	0.2 mg/ml in 1X PBS with 0.1 mg/ml BSA (US sourced) and 0.05% sodium azide	20 ug
V8066SAF-100UG	1 mg/ml in 1X PBS; BSA free, sodium azide free	100 ug

Bulk quote request

Availability	1-3 business days
Species Reactivity	Human
Format	Purified
Clonality	Monoclonal (mouse origin)
Isotype	Mouse IgG2b, kappa
Clone Name	SPM316
Purity	Protein G affinity chromatography
UniProt	P15927
Applications	Western Blot : 1-2ug/ml
Limitations	This Replication Protein A2 antibody is available for research use only.



Western blot testing of human samples with Replication Protein A2 antibody (clone SPM316). Expected molecular weight ~32 kDa.

Description

Recognizes a protein of 34kDa, identified as a subunit of Replication Protein A (RPA) (also known as human single-stranded DNA binding protein, or HSSB). RPA from human cells is a stable heterotrimer of 70kDa, 32-34kDa, and 11-14kDa subunits (RPA70, RPA32, and RPA14 respectively). It is involved in DNA replication, repair, and

recombination. RPA is required for the SV40 large tumor antigen-catalyzed unwinding of SV40 DNA and stimulates DNA polymerase (pol) alpha and delta. RPA34 is phosphorylated at the G1/S boundary of the cell cycle or upon exposure of cells to DNA damage-inducing agents including ionizing and UV radiation.

Application Notes

Optimal dilution of the Replication Protein A2 antibody should be determined by the researcher.

Immunogen

A recombinant human full-length protein was used as the immunogen for this Replication Protein A2 antibody.

Storage

Store the Replication Protein A2 antibody at 2-8oC (with azide) or aliquot and store at -20oC or colder (without azide).