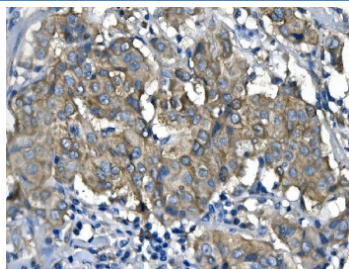


RENT1 Antibody / hUPF1 [clone 11E7.] (RQ5658)

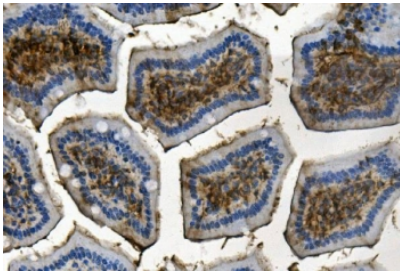
Catalog No.	Formulation	Size
RQ5658	0.5mg/ml if reconstituted with 0.2ml sterile DI water	100 ug

Bulk quote request

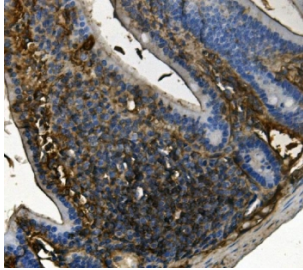
Availability	1-3 business days
Species Reactivity	Human, Mouse, Rat
Format	Antigen affinity purified
Clonality	Monoclonal
Isotype	Mouse IgG2b
Clone Name	11E7.
Purity	Affinity purified
Buffer	Lyophilized from 1X PBS with 2% Trehalose and 0.025% sodium azide
UniProt	Q92900
Localization	Nuclear, cytoplasmic
Applications	Western Blot : 0.5-1ug/ml Immunohistochemistry : 1-2ug/ml Immunofluorescence : 2-4ug/ml
Limitations	This RENT1 antibody is available for research use only.



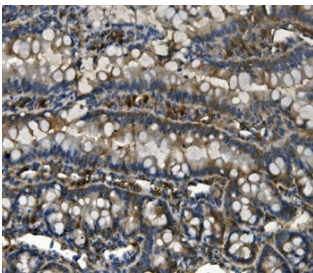
IHC staining of FFPE human breast cancer with RENT1 antibody. HIER: boil tissue sections in pH8 EDTA for 20 min and allow to cool before testing.



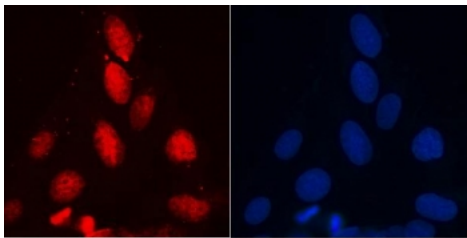
IHC staining of FFPE mouse intestine with RENT1 antibody. HIER: boil tissue sections in pH8 EDTA for 20 min and allow to cool before testing.



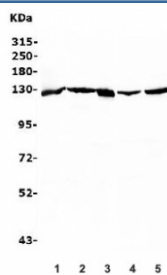
IHC staining of FFPE mouse intestine with RENT1 antibody. HIER: boil tissue sections in pH8 EDTA for 20 min and allow to cool before testing.



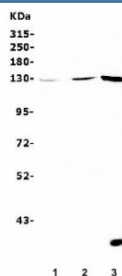
IHC staining of FFPE rat intestine with RENT1 antibody. HIER: boil tissue sections in pH8 EDTA for 20 min and allow to cool before testing.



Immunofluorescent staining of FFPE human U-2 OS cells with RENT1 antibody (red) and DAPI nuclear stain (blue). HIER: steam section in pH6 citrate buffer for 20 min.



Western blot testing of human 1) HepG2, 2) Raji, 3) PC-3, 4) HeLa and 5) HEK293 lysate with RENT1 antibody. Predicted molecular weight ~124 kDa, but routinely observed at 130-140 kDa.



Western blot testing of 1) rat brain, 2) mouse brain and 3) mouse RAW264.7 lysate with RENT1 antibody. Predicted molecular weight ~124 kDa, but routinely observed at 130-140 kDa.

Description

Regulator of nonsense transcripts 1 is a protein that in humans is encoded by the UPF1 gene. This gene encodes a

protein that is part of a post-splicing multiprotein complex involved in both mRNA nuclear export and mRNA surveillance. mRNA surveillance detects exported mRNAs with truncated open reading frames and initiates nonsense-mediated mRNA decay (NMD). When translation ends upstream from the last exon-exon junction, this triggers NMD to degrade mRNAs containing premature stop codons. And this protein is located only in the cytoplasm. When translation ends, it interacts with the protein that is a functional homolog of yeast Upf2p to trigger mRNA decapping. Use of multiple polyadenylation sites has been noted for this gene. Alternative splicing results in multiple transcript variants.

Application Notes

Optimal dilution of the RENT1 antibody should be determined by the researcher.

Immunogen

Amino acids NMDSMPQLQKLQQLKDETGLSSADEKRYRALKRT AE from the human protein were used as the immunogen for the RENT1 antibody.

Storage

After reconstitution, the RENT1 antibody can be stored for up to one month at 4°C. For long-term, aliquot and store at -20°C. Avoid repeated freezing and thawing.