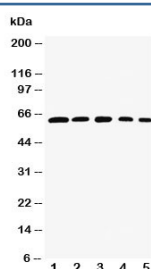


RelB Antibody (R30901)

| Catalog No. | Formulation | Size |
|-------------|---|--------|
| R30901 | 0.5mg/ml if reconstituted with 0.2ml sterile DI water | 100 ug |

Bulk quote request

| | |
|---------------------------|--|
| Availability | 1-3 business days |
| Species Reactivity | Human, Mouse, Rat |
| Format | Antigen affinity purified |
| Clonality | Polyclonal (rabbit origin) |
| Isotype | Rabbit IgG |
| Purity | Antigen affinity |
| Buffer | Lyophilized from 1X PBS with 2.5% BSA and 0.025% sodium azide/thimerosal |
| UniProt | Q01201 |
| Applications | Western Blot : 0.5-1ug/ml |
| Limitations | This RelB antibody is available for research use only. |



Western blot testing of RelB antibody and Lane 1: rat testis; 2: (h) HeLa; 3: (m) NIH3T3; 4: (h) Raji; 5: (m) HEPA cell lysate. Predicted size: 62-70KD

Description

RelB (v-rel reticuloendotheliosis viral oncogene homolog B) is also known as IREL. By RT-PCR and immunocytochemical analyses, Clark et al.(1999) showed that protein expression correlated with dendritic cell activation. NF-kappa-B-inducing kinase is required for osteoclastogenesis in response to pathologic stimuli. Vaira et al.(2008) found that overexpression of RelB, but not RelA, rescued differentiation of mouse Nik ^{-/-} osteoclast precursors, indicating that blockade of the alternative NF-kappa-B pathway, rather than the classic pathway, is responsible for the osteoclastogenic defect in the absence of Nik. Using RelB ^{-/-} mice, they showed that the protein itself was required for RankL-induced osteoclastogenesis in vitro and for TNF-induced bone resorption in vivo. Both RelB ^{-/-} and Nik ^{-/-} mice were resistant to tumor-mediated osteolysis. Vaira et al.(2008) concluded that the alternative NF-kappa-B pathway, via RelB, plays an

essential and unique role in RankL signaling toward osteoclast development.

Application Notes

The stated application concentrations are suggested starting amounts. Titration of the RelB antibody may be required due to differences in protocols and secondary/substrate sensitivity.

Immunogen

Amino acids 393-413 (LPFTYLPRDHDSYGVDKKRKR-human) were used as the immunogen for this RelB antibody (100% mouse homology).

Storage

After reconstitution, the Rel B antibody can be stored for up to one month at 4oC. For long-term, aliquot and store at -20oC. Avoid repeated freezing and thawing.