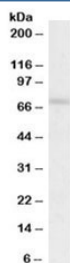


REL Antibody / c-Rel (R34780)

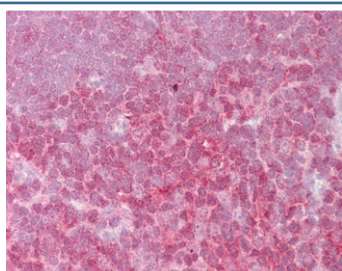
Catalog No.	Formulation	Size
R34780-100UG	0.5 mg/ml in 1X TBS, pH7.3, with 0.5% BSA (US sourced) and 0.02% sodium azide	100 ug

[Bulk quote request](#)

Availability	1-3 business days
Species Reactivity	Human
Predicted Reactivity	Dog
Format	Antigen affinity purified
Clonality	Polyclonal (goat origin)
Isotype	Goat Ig
Purity	Antigen affinity
Gene ID	5966
Applications	Western Blot : 0.5-2ug/ml IHC (FFPE) : 2.5ug/ml ELISA (peptide) LOD : 1:16000
Limitations	This REL antibody is available for research use only.



Western blot testing of human spleen lysate with REL antibody at 0.5ug/ml. Predicted molecular weight: ~69 kDa.



IHC testing of FFPE human thymus tissue with REL antibody at 2.5ug/ml. Required HIER: steamed antigen retrieval with pH6 citrate buffer; AP-staining.

Description

Additional name(s) for this target protein: V-rel reticuloendotheliosis viral oncogene

Application Notes

Optimal dilution of the REL antibody should be determined by the researcher.

Immunogen

Amino acids NDLNASNACIYN were used as the immunogen for this REL antibody.

Storage

Aliquot and store the REL antibody at -20oC.