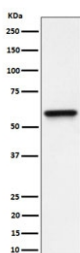


Regulator of G-protein signaling 6 Antibody / RGS6 [clone 29R02] (RQ8729)

Catalog No.	Formulation	Size
RQ8729	Antibody in PBS with 0.02% sodium azide, 50% glycerol and 0.4-0.5mg/ml BSA	100 ul

[Bulk quote request](#)

Availability	1-3 days
Species Reactivity	Human
Format	Purified
Clonality	Rabbit Monoclonal
Isotype	Rabbit IgG
Clone Name	29R02
Purity	Affinity chromatography
UniProt	P49758
Applications	Western Blot : 1:500-1:2000
Limitations	This Regulator of G-protein signaling 6 antibody is available for research use only.



Western blot testing of human HeLa cell lysate with Regulator of G-protein signaling 6 antibody. Predicted molecular weight ~54 kDa.

Description

RGS6 gene encodes a member of the RGS (regulator of G protein signaling) family of proteins, which are defined by the presence of a RGS domain that confers the GTPase-activating activity of these proteins toward certain G alpha subunits. The RGS proteins negatively regulate G protein signaling, and may modulate neuronal, cardiovascular, lymphocytic activities, and cancer risk.

Application Notes

Optimal dilution of the Regulator of G-protein signaling 6 antibody should be determined by the researcher.

Immunogen

A synthetic peptide specific to human Regulator of G-protein signaling 6 protein was used as the immunogen for the Regulator of G-protein signaling 6 antibody.

Storage

Store the Regulator of G-protein signaling 6 antibody at -20oC.