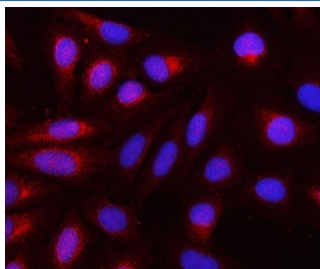


## REEP3 Antibody / Receptor expression-enhancing protein 3 (RQ8252)

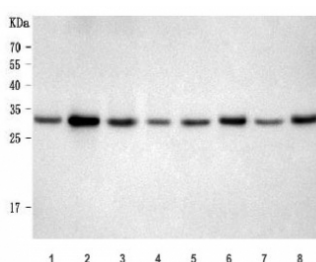
Catalog No.	Formulation	Size
RQ8252	0.5mg/ml if reconstituted with 0.2ml sterile DI water	100 ug

**Bulk quote request**

<b>Availability</b>	1-3 business days
<b>Species Reactivity</b>	Human, Mouse, Rat
<b>Format</b>	Antigen affinity purified
<b>Clonality</b>	Polyclonal (rabbit origin)
<b>Isotype</b>	Rabbit IgG
<b>Purity</b>	Antigen affinity purified
<b>Buffer</b>	Lyophilized from 1X PBS with 2% Trehalose
<b>UniProt</b>	Q6NUK4
<b>Localization</b>	Cytoplasm
<b>Applications</b>	Western Blot : 0.5-1ug/ml Immunofluorescence : 5ug/ml
<b>Limitations</b>	This REEP3 antibody is available for research use only.



Immunofluorescent staining of FFPE human U-2 OS cells with REEP3 antibody (red) and DAPI nuclear stain (blue). HIER: steam section in pH6 citrate buffer for 20 min.



Western blot testing of 1) human HaCaT, 2) human PC-3, 3) human A431, 4) human SiHa, 5) rat brain, 6) rat PC-12, 7) mouse brain and 8) mouse NIH 3T3 cell lysate with REEP3 antibody. Predicted molecular weight ~29 kDa (two isoforms).

## Description

Predicted to enable microtubule binding activity. Involved in mitotic nuclear membrane reassembly. Predicted to be integral component of membrane. Predicted to be active in cytoplasmic microtubule; endoplasmic reticulum membrane; and endoplasmic reticulum tubular network.

## Application Notes

Optimal dilution of the REEP3 antibody should be determined by the researcher.

## Immunogen

Amino acids KEVRYGSLKYKVKRPPQVYFC were used as the immunogen for the REEP3 antibody.

## Storage

After reconstitution, the REEP3 antibody can be stored for up to one month at 4°C. For long-term, aliquot and store at -20°C. Avoid repeated freezing and thawing.