

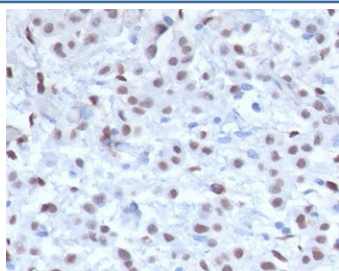
## Recombinant Wilms Tumor 1 Antibody [clone MMWT1-1] (V7601)

Catalog No.	Formulation	Size
V7601-100UG	0.2 mg/ml in 1X PBS with 0.1 mg/ml BSA (US sourced) and 0.05% sodium azide	100 ug
V7601-20UG	0.2 mg/ml in 1X PBS with 0.1 mg/ml BSA (US sourced) and 0.05% sodium azide	20 ug
V7601SAF-100UG	1 mg/ml in 1X PBS; BSA free, sodium azide free	100 ug
V7601IHC-7ML	Prediluted in 1X PBS with 0.1 mg/ml BSA (US sourced) and 0.05% sodium azide; *For IHC use only*	7 ml

Recombinant **MOUSE MONOCLONAL**

[Bulk quote request](#)

<b>Availability</b>	1-3 business days
<b>Species Reactivity</b>	Human
<b>Format</b>	Purified
<b>Clonality</b>	Recombinant Mouse Monoclonal
<b>Isotype</b>	Mouse IgG1, kappa
<b>Clone Name</b>	MMWT1-1
<b>Purity</b>	Protein G affinity chromatography
<b>UniProt</b>	P19544
<b>Localization</b>	Nuclear, cytoplasmic
<b>Applications</b>	Immunohistochemistry (FFPE) : 1-2ug/ml for 30 min at RT (1) Prediluted IHC Only Format : incubate for 30 min at RT (2)
<b>Limitations</b>	This recombinant Wilms Tumor 1 antibody is available for research use only.



IHC testing of FFPE human mesothelioma with recombinant Wilms Tumor 1 antibody (clone MMWT1-1). Required HIER: boil tissue sections in pH 9 10mM Tris with 1mM EDTA for 10-20 min followed by cooling at RT for 20 min.

## Description

Wilms Tumor is a transcription factor that plays an important role in cellular development and cell survival. Regulates the expression of numerous target genes, including EPO. Plays an essential role for development of the urogenital system. Recognizes and binds to the DNA sequence 5'-CGCCCCCGC-3'. It has a tumor suppressor as well as an oncogenic role in tumor formation. Function may be isoform-specific: isoforms lacking the KTS motif may act as transcription factors. Isoforms containing the KTS motif may bind mRNA and play a role in mRNA metabolism or splicing. Isoform 1 has lower affinity for DNA, and can bind RNA. [UniProt]

## Application Notes

Titering of the recombinant Wilms Tumor 1 antibody may be required for optimal performance.

2. The prediluted format is supplied in a dropper bottle and is optimized for use in IHC. After epitope retrieval step (if required), drip mAb solution onto the tissue section and incubate at RT for 30 min.

## Immunogen

A recombinant human protein was used as the immunogen for the recombinant Wilms Tumor 1 antibody.

## Storage

Store the recombinant Wilms Tumor 1 antibody at 2-8oC (with azide) or aliquot and store at -20oC or colder (without azide).