

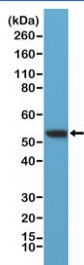
Recombinant Vimentin Antibody / C-Terminal [clone RM289] (R20315)

| Catalog No. | Formulation | Size |
|--------------|--|--------|
| R20315-0.1ML | Antibody in PBS with 50% glycerol, 1% BSA and 0.09% sodium azide | 100 ul |

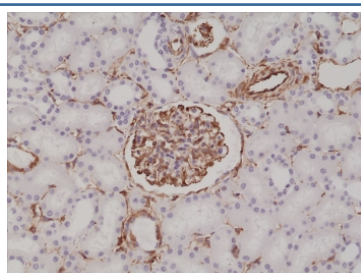
Recombinant **RABBIT MONOCLONAL**

[Bulk quote request](#)

| | |
|--------------------|---|
| Availability | 1-3 business days |
| Species Reactivity | Human |
| Format | Purified |
| Clonality | Recombinant Rabbit Monoclonal |
| Isotype | Rabbit IgG |
| Clone Name | RM289 |
| Purity | Protein A purified from animal origin-free supernatant |
| UniProt | P08670 |
| Localization | Cytoplasmic, cell membrane |
| Applications | Immunohistochemistry (FFPE) : 1:100-1:200 Western Blot : 1:200-1:500 |
| Limitations | This recombinant Vimentin antibody is available for research use only. |



Western blot testing of human HeLa lysate with recombinant Vimentin antibody at 1:400 dilution. Predicted molecular weight ~53 kDa.



IHC testing of formalin fixed and paraffin embedded human kidney tissue with recombinant Vimentin antibody at 1:200 dilution. HIER: steam section in pH6 citrate buffer for 20 min and allow to cool prior to staining.

Description

This antibody reacts to human Vimentin. It may also react to mouse or rat Vimentin, as predicted by immunogen homology.

Application Notes

The stated application concentrations are suggested starting points. Titration of the recombinant Vimentin antibody may be required due to differences in protocols and secondary/substrate sensitivity.

Immunogen

A peptide corresponding to the C-terminus of human Vimentin was used as the immunogen for the recombinant Vimentin antibody.

Storage

Store the recombinant Vimentin antibody at -20oC.