

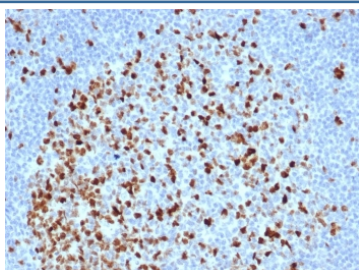
Recombinant Topoisomerase II alpha Antibody / TOP2A [clone TOP2A/6570R] (V9310)

Catalog No.	Formulation	Size
V9310-100UG	0.2 mg/ml in 1X PBS with 0.1 mg/ml BSA (US sourced), 0.05% sodium azide	100 ug
V9310-20UG	0.2 mg/ml in 1X PBS with 0.1 mg/ml BSA (US sourced), 0.05% sodium azide	20 ug
V9310SAF-100UG	1 mg/ml in 1X PBS; BSA free, sodium azide free	100 ug

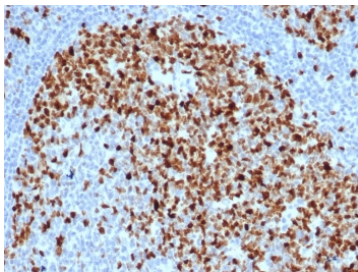
Recombinant **RABBIT MONOCLONAL**

[Bulk quote request](#)

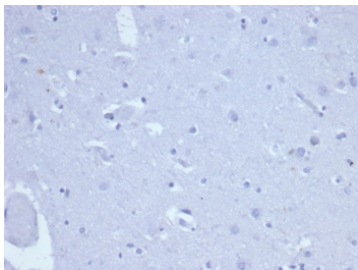
Availability	1-3 business days
Species Reactivity	Human
Format	Purified
Clonality	Recombinant Rabbit Monoclonal
Isotype	Rabbit IgG
Clone Name	TOP2A/6570R
Purity	Protein A/G affinity
UniProt	P11388
Localization	Nuclear
Applications	Western Blot : 2-4ug/ml Immunohistochemistry (FFPE) : 1-2ug/ml
Limitations	This recombinant Topoisomerase II alpha antibody is available for research use only.



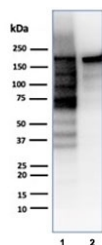
IHC staining of FFPE human lymph node tissue with recombinant Topoisomerase II alpha antibody (clone TOP2A/6570R). HIER: boil tissue sections in pH 9 10mM Tris with 1mM EDTA for 20 min and allow to cool before testing.



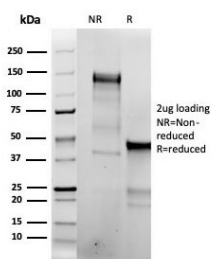
IHC staining of FFPE human tonsil tissue with recombinant Topoisomerase II alpha antibody (clone TOP2A/6570R). HIER: boil tissue sections in pH 9 10mM Tris with 1mM EDTA for 20 min and allow to cool before testing.



Negative control: IHC staining of FFPE human brain tissue using recombinant Topoisomerase II alpha antibody (clone TOP2A/6570R) at 2ug/ml in PBS for 30min RT. HIER: boil tissue sections in pH 9 10mM Tris with 1mM EDTA for 20 min and allow to cool before testing.



Western blot testing of human HeLa and Jurkat cell lysates using recombinant Topoisomerase II alpha antibody (clone TOP2A/6570R). Predicted molecular weight ~174 kDa.



SDS-PAGE analysis of purified, BSA-free recombinant Topoisomerase II alpha antibody (clone TOP2A/6570R) as confirmation of integrity and purity.

Description

The topoisomerase IIa is the predominant mechanism of resistance to several chemotherapeutic agents.

Application Notes

Optimal dilution of the recombinant Topoisomerase II alpha antibody should be determined by the researcher.

Immunogen

A portion of amino acids 1352-1493 was used as the immunogen for the recombinant Topoisomerase II alpha antibody.

Storage

Aliquot the recombinant Topoisomerase II alpha antibody and store frozen at -20oC or colder. Avoid repeated freeze-thaw cycles.

