

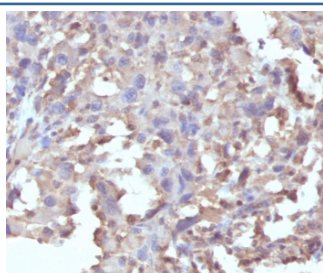
Recombinant TNF-alpha Antibody / Rabbit Monoclonal [clone RMTNFA-1] (V7220)

Catalog No.	Formulation	Size
V7220-100UG	0.2 mg/ml in 1X PBS with 0.1 mg/ml BSA (US sourced) and 0.05% sodium azide	100 ug
V7220-20UG	0.2 mg/ml in 1X PBS with 0.1 mg/ml BSA (US sourced) and 0.05% sodium azide	20 ug
V7220SAF-100UG	1 mg/ml in 1X PBS; BSA free, sodium azide free	100 ug
V7220IHC-7ML	Prediluted in 1X PBS with 0.1 mg/ml BSA (US sourced) and 0.05% sodium azide; *For IHC use only*	7 ml

Recombinant RABBIT MONOCLONAL

[Bulk quote request](#)

Availability	1-3 business days
Species Reactivity	Human
Format	Purified
Clonality	Recombinant Rabbit Monoclonal
Isotype	Rabbit IgG, kappa
Clone Name	RMTNFA-1
Purity	Protein A affinity chromatography
UniProt	P01375
Localization	Cytoplasmic and extracellular (secreted)
Applications	Immunohistochemistry (FFPE) : 2-5ug/ml for 30 min at RT Prediluted IHC Only Format : incubate for 30 min at RT (1)
Limitations	This recombinant TNF-alpha antibody is available for research use only.



IHC staining of FFPE human histiocytoma with recombinant TNF alpha antibody (clone RMTNFA-1). Required HIER: steam sections in pH 9 10mM Tris with 1mM EDTA for 10-20 min.

Description

Application Notes

Optimal dilution of the recombinant TNF-alpha antibody should be determined by the researcher.

1. The prediluted format is supplied in a dropper bottle and is optimized for use in IHC. After epitope retrieval step (if required), drip mAb solution onto the tissue section and incubate at RT for 30 min.

Immunogen

Recombinant human protein was used as the immunogen for the recombinant TNF-alpha antibody.

Storage

Store the recombinant TNF-alpha antibody at 2-8oC (with azide) or aliquot and store at -20oC or colder (without azide).