

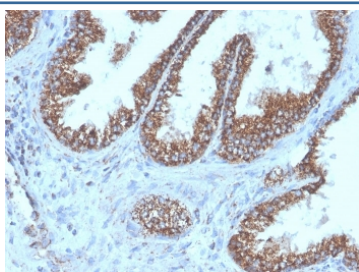
Recombinant TMEPAI Antibody / PMEPA1 [clone PMEPA1/6421R] (V9209)

Catalog No.	Formulation	Size
V9209-100UG	0.2 mg/ml in 1X PBS with 0.1 mg/ml BSA (US sourced), 0.05% sodium azide	100 ug
V9209-20UG	0.2 mg/ml in 1X PBS with 0.1 mg/ml BSA (US sourced), 0.05% sodium azide	20 ug
V9209SAF-100UG	1 mg/ml in 1X PBS; BSA free, sodium azide free	100 ug

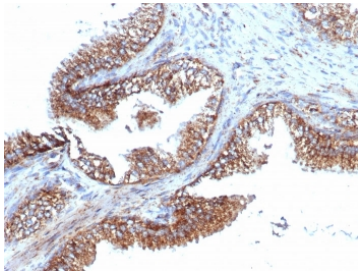
Recombinant **RABBIT MONOCLONAL**

[Bulk quote request](#)

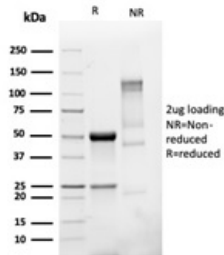
Availability	1-3 business days
Species Reactivity	Human
Format	Purified
Clonality	Recombinant Rabbit Monoclonal
Isotype	Rabbit IgG
Clone Name	PMEPA1/6421R
Purity	Protein A/G affinity
UniProt	Q96W9
Localization	Cell surface, Cytoplasm
Applications	Immunohistochemistry (FFPE) : 1-2ug/ml
Limitations	This recombinant TMEPAI antibody is available for research use only.



IHC staining of FFPE human prostate carcinoma tissue with recombinant TMEPA1 antibody (clone PMEPA1/6421R). HIER: boil tissue sections in pH 9 10mM Tris with 1mM EDTA for 20 min and allow to cool before testing.



IHC staining of FFPE human prostate carcinoma tissue with recombinant TMEPAI antibody (clone PMEPA1/6421R). HIER: boil tissue sections in pH 9 10mM Tris with 1mM EDTA for 20 min and allow to cool before testing.



SDS-PAGE analysis of purified, BSA-free recombinant TMEPAI antibody (recombinant PMEPA1/6421R) as confirmation of integrity and purity.

Description

PMEPA1 (prostate transmembrane protein, androgen induced 1) is a 287 amino acid single-pass membrane protein that contains WW-binding motifs and localizes to the cell membrane. Expressed at high levels in prostate, kidney and ovary, PMEPA1 interacts with NEDD4 and may play a role in regulating AR (androgen receptor) levels, specifically in prostate cells. Down regulation of PMEPA1 is observed in prostate tumors, suggesting that PMEPA1 may exhibit activity as a tumor suppressor. Overexpression of this protein may play a role in multiple types of cancer.

Application Notes

Optimal dilution of the recombinant TMEPAI antibody should be determined by the researcher.

Immunogen

Recombinant full-length human PMEPA1/TMEPAI protein was used as the immunogen for the recombinant TMEPAI antibody.

Storage

Aliquot the recombinant TMEPAI antibody and store frozen at -20°C or colder. Avoid repeated freeze-thaw cycles.