

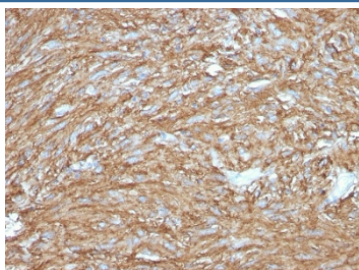
Recombinant TMEM16A Antibody / DOG1 / ANO1 [clone DG1/2831R] (V7453)

Catalog No.	Formulation	Size
V7453-100UG	0.2 mg/ml in 1X PBS with 0.1 mg/ml BSA (US sourced) and 0.05% sodium azide	100 ug
V7453-20UG	0.2 mg/ml in 1X PBS with 0.1 mg/ml BSA (US sourced) and 0.05% sodium azide	20 ug
V7453SAF-100UG	1 mg/ml in 1X PBS; BSA free, sodium azide free	100 ug
V7453IHC-7ML	Prediluted in 1X PBS with 0.1 mg/ml BSA (US sourced) and 0.05% sodium azide; *For IHC use only*	7 ml

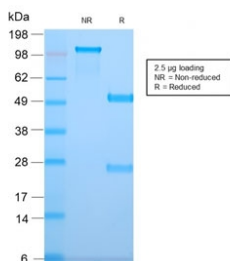
Recombinant **RABBIT MONOCLONAL**

[Bulk quote request](#)

Species Reactivity	Human
Format	Purified
Clonality	Recombinant Rabbit Monoclonal
Isotype	Rabbit IgG, kappa
Clone Name	DG1/2831R
Purity	Protein A affinity chromatography
UniProt	Q5XXA6
Gene ID	55107
Localization	Cell Surface and Cytoplasmic
Applications	Immunohistochemistry (FFPE) : 1-2ug/ml for 30 min at RT
Limitations	This recombinant TMEM16A antibody is available for research use only.



IHC testing of FFPE human gastrointestinal stromal tumor (GIST) with TMEM16A antibody (clone DG1/2831R). Required HIER: boil tissue sections in pH 9 10mM Tris with 1mM EDTA for 10-20 min followed by cooling at RT for 20 min.



SDS-PAGE analysis of purified, BSA-free recombinant TMEM16A antibody (clone DG1/2831R) as confirmation of integrity and purity.

Description

Expression of DOG1/ANO1/TMEM16A protein is elevated in the gastrointestinal stromal tumors (GIST's), c-kit signaling-driven mesenchymal tumors of the GI tract. TMEM16A is rarely expressed in other soft tissue tumors, which, due to appearance, may be difficult to diagnose. Immunoreactivity for TMEM16A has been reported in 97.8 percent of scorable GIST's, including all c-kit negative GIST's. Overexpression has been suggested to aid in the identification of GISTs, including Platelet-Derived Growth Factor Receptor Alpha mutants that fail to express c-kit antigen. The overall sensitivity of TMEM16A and c-kit in GIST's is nearly identical: 94.4% vs. 94.7%.

Application Notes

The concentration stated for each application is a general starting point. Variations in protocols, secondaries and substrates may require the recombinant TMEM16A antibody to be titrated up or down for optimal performance.

1. The prediluted format is supplied in a dropper bottle and is optimized for use in IHC. After epitope retrieval step (if required), drip mAb solution onto the tissue section and incubate at RT for 30 min.

Immunogen

A portion of amino acids 2-101 from the human protein was used as the immunogen for this recombinant TMEM16A antibody.

Storage

Store the recombinant TMEM16A antibody at 2-8°C (with azide) or aliquot and store at -20°C or colder (without azide).

References (1)