

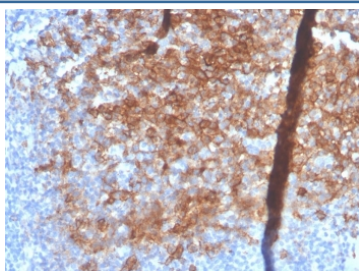
Recombinant Syndecan-1 Antibody / CD138 [clone SDC1/4378R] (V8716)

Catalog No.	Formulation	Size
V8716-100UG	0.2 mg/ml in 1X PBS with 0.1 mg/ml BSA (US sourced) and 0.05% sodium azide	100 ug
V8716-20UG	0.2 mg/ml in 1X PBS with 0.1 mg/ml BSA (US sourced) and 0.05% sodium azide	20 ug
V8716SAF-100UG	1 mg/ml in 1X PBS; BSA free, sodium azide free	100 ug

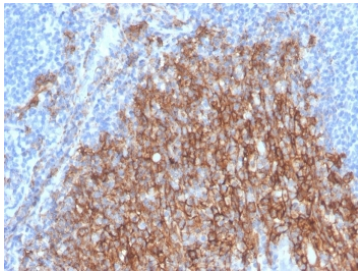
Recombinant **RABBIT MONOCLONAL**

[Bulk quote request](#)

Availability	1-3 business days
Species Reactivity	Human
Format	Purified
Clonality	Recombinant Rabbit Monoclonal
Isotype	Rabbit IgG, kappa
Clone Name	SDC1/4378R
Purity	Protein A affinity chromatography
UniProt	P18827
Localization	Cell surface
Applications	Immunohistochemistry (FFPE) : 1-2ug/ml for 30 minutes at RT
Limitations	This recombinant Syndecan-1 antibody is available for research use only.



IHC staining of FFPE human small intestine with recombinant Syndecan-1 antibody (clone SDC1/4378R). HIER: boil tissue sections in pH 9 10mM Tris with 1mM EDTA for 20 min and allow to cool before testing.



IHC staining of FFPE human small intestine with recombinant Syndecan-1 antibody (clone SDC1/4378R). HIER: boil tissue sections in pH 9 10mM Tris with 1mM EDTA for 20 min and allow to cool before testing.

Description

CD138, also designated syndecan-1, is a member of the syndecan family of four transmembrane spanning proteins capable of binding to heparan sulfate and chondroitin sulfate molecules. The syndecans main functions are to control cell growth and differentiation as well as to maintain cell adhesion and cell migration. Under normal conditions CD138/Syndecan-1 is predominantly expressed on mature plasma cells and early preB-cells, while other haematolymphoid cells are negative. Various types of epithelial cells are also CD138/Syndecan-1 positive. Squamous epithelial cells show strong membranous and some cytoplasmic staining, except for the mature superficial squamous epithelial cells which are unstained. Mature mesenchymal and neural tissues are not stained. Among haematolymphoid neoplasms, it is expressed in practically all cases of plasma cell malignancies. Among non-haematolymphoid neoplasms the expression of CD138 is found in various types of carcinoma. In the following, the large majority of cases is CD138 positive: skin squamous cell carcinoma and basal cell carcinoma, colorectal adenocarcinoma, cholangiocarcinoma, transitional cell carcinoma, endometrial adenocarcinoma, ductal and lobular breast carcinoma, hepatocellular carcinoma, renal cell carcinoma, and lung adenocarcinoma. CD138/Syndecan-1 is a very sensitive and specific marker for identification of plasma cells and plasma cell differentiation within haematolymphoid tissues in benign and neoplastic conditions.

Application Notes

Optimal dilution of the recombinant Syndecan-1 antibody should be determined by the researcher.

Immunogen

A portion of amino acids 200-300 from the human protein was used as the immunogen for the recombinant Syndecan-1 antibody.

Storage

Store the recombinant Syndecan-1 antibody at 2-8°C (with azide) or aliquot and store at -20°C or colder (without azide).