

Recombinant Synaptophysin Antibody / SYP [clone SYP/4389R] (V9165)

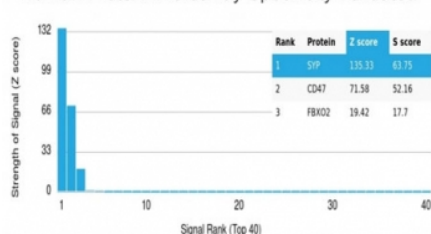
Catalog No.	Formulation	Size
V9165-100UG	0.2 mg/ml in 1X PBS with 0.1 mg/ml BSA (US sourced), 0.05% sodium azide	100 ug
V9165-20UG	0.2 mg/ml in 1X PBS with 0.1 mg/ml BSA (US sourced), 0.05% sodium azide	20 ug
V9165SAF-100UG	1 mg/ml in 1X PBS; BSA free, sodium azide free	100 ug

Recombinant **RABBIT MONOCLONAL**

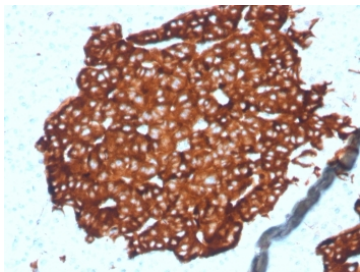
[Bulk quote request](#)

Availability	1-3 business days
Species Reactivity	Human
Format	Purified
Clonality	Recombinant Rabbit Monoclonal
Isotype	Rabbit IgG
Clone Name	SYP/4389R
Purity	Protein A/G affinity
UniProt	P08247
Localization	Cytoplasmic
Applications	Immunohistochemistry (FFPE) : 1-2ug/ml
Limitations	This recombinant Synaptophysin antibody is available for research use only.

Human Protein Microarray Specificity Validated



Analysis of HuProt(TM) microarray containing more than 19,000 full-length human proteins using recombinant Synaptophysin antibody (clone SYP/4389R). These results demonstrate the foremost specificity of the SYP/4389R mAb. Z- and S- score: The Z-score represents the strength of a signal that an antibody (in combination with a fluorescently-tagged anti-IgG secondary Ab) produces when binding to a particular protein on the HuProt(TM) array. Z-scores are described in units of standard deviations (SD's) above the mean value of all signals generated on that array. If the targets on the HuProt(TM) are arranged in descending order of the Z-score, the S-score is the difference (also in units of SD's) between the Z-scores. The S-score therefore represents the relative target specificity of an Ab to its intended target.



IHC staining of FFPE human pancreatic tissue with recombinant Synaptophysin antibody (clone SYP/4389R). HIER: boil tissue sections in pH 9 10mM Tris with 1mM EDTA for 20 min and allow to cool before testing.

Description

Synaptophysin is an N-glycosylated integral membrane protein found in neurons and endocrine cells.

Application Notes

Optimal dilution of the recombinant Synaptophysin antibody should be determined by the researcher.

Immunogen

A portion of amino acids 274-313 was used as the immunogen for the recombinant Synaptophysin antibody.

Storage

Aliquot the recombinant Synaptophysin antibody and store frozen at -20oC or colder. Avoid repeated freeze-thaw cycles.