

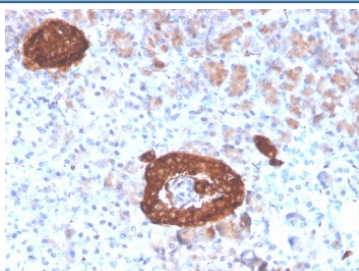
Recombinant Synaptophysin Antibody [clone rSYP/4654] (V8644)

Catalog No.	Formulation	Size
V8644-100UG	0.2 mg/ml in 1X PBS with 0.1 mg/ml BSA (US sourced) and 0.05% sodium azide	100 ug
V8644-20UG	0.2 mg/ml in 1X PBS with 0.1 mg/ml BSA (US sourced) and 0.05% sodium azide	20 ug
V8644SAF-100UG	1 mg/ml in 1X PBS; BSA free, sodium azide free	100 ug

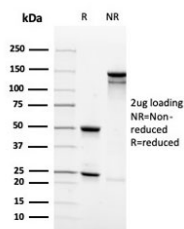
Recombinant **MOUSE MONOCLONAL**

[Bulk quote request](#)

Availability	1-3 business days
Species Reactivity	Human
Format	Purified
Clonality	Recombinant Mouse Monoclonal
Isotype	Mouse IgG2a, kappa
Clone Name	rSYP/4654
Purity	Protein G affinity chromatography
UniProt	IDP08247
Localization	Cytoplasmic
Applications	Immunohistochemistry (FFPE) : 1-2ug/ml for 30 minutes at RT
Limitations	This recombinant Synaptophysin antibody is available for research use only.



IHC staining of FFPE human pancreas with recombinant Synaptophysin antibody (clone rSYP/4654). HIER: boil tissue sections in pH 9 10mM Tris with 1mM EDTA for 20 min and allow to cool before testing.



SDS-PAGE analysis of purified, BSA-free recombinant Synaptophysin antibody (clone rSYP/4654) as confirmation of integrity and purity.

Description

This monoclonal antibody recognizes a protein of 38kDa that is identified as synaptophysin. It is an N-glycosylated integral membrane protein found in neurons and endocrine cells. Synaptophysin contains four transmembrane domains and may function as a gap junction-like channel. This antibody identifies normal neuroendocrine cells and neuroendocrine neoplasms. Diffuse, finely granular, cytoplasmic staining is observed, which probably correlates with the distribution of the antigen within neurosecretory vesicles. Synaptophysin is an independent, broad-range marker of neural and neuroendocrine differentiation.

Application Notes

Optimal dilution of the recombinant Synaptophysin antibody should be determined by the researcher.

Immunogen

A portion of amino acids 224-313 from the human protein was used as the immunogen for the recombinant Synaptophysin antibody.

Storage

Store the recombinant Synaptophysin antibody at 2-8°C (with azide) or aliquot and store at -20°C or colder (without azide).