

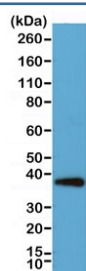
Recombinant Synaptophysin Antibody [clone RM258] (R20280)

Catalog No.	Formulation	Size
R20280-0.1ML	Antibody in PBS with 50% glycerol, 1% BSA and 0.09% sodium azide	100 ul

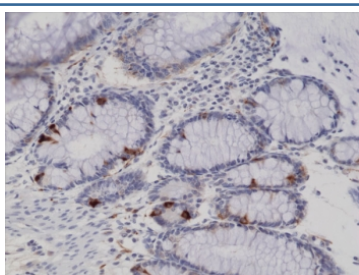
Recombinant **RABBIT MONOCLONAL**

[Bulk quote request](#)

Availability	1-3 business days
Species Reactivity	Human
Format	Purified
Clonality	Recombinant Rabbit Monoclonal
Isotype	Rabbit IgG
Clone Name	RM258
Purity	Protein A purified from animal origin-free supernatant
UniProt	P08247
Gene ID	6855
Applications	Western Blot : 1:1000-1:2000 Immunohistochemistry (FFPE) : 1:200- 1:500 (1)
Limitations	This recombinant Synaptophysin antibody is available for research use only.



Western blot testing of human HeLa cell lysate with recombinant Synaptophysin antibody. Predicted molecular weight: 34-38 kDa.



IHC testing of FFPE human colon tissue with recombinant Synaptophysin antibody.

Description

This recombinant Synaptophysin antibody reacts to the human protein.

Application Notes

The stated application concentrations are suggested starting points. Titration of the recombinant Synaptophysin antibody may be required due to differences in protocols and secondary/substrate sensitivity.

1. A pH6 Citrate buffer or pH9 Tris/EDTA buffer HIER step is recommended for testing of FFPE tissue sections.

Immunogen

A peptide corresponding to the C-terminus of Synaptophysin was used as the immunogen for this recombinant Synaptophysin antibody.

Storage

Store the recombinant Synaptophysin antibody at -20oC (with glycerol) or aliquot and store at -20oC (without glycerol).