

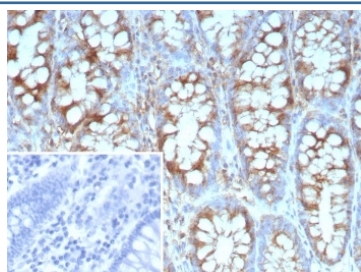
Recombinant Stathmin 1 Antibody / STMN1 [clone STMN1/9227R] (V5507)

Catalog No.	Formulation	Size
V5507-100UG	0.2 mg/ml in 1X PBS with 0.1 mg/ml BSA (US sourced), 0.05% sodium azide	100 ug
V5507-20UG	0.2 mg/ml in 1X PBS with 0.1 mg/ml BSA (US sourced), 0.05% sodium azide	20 ug
V5507SAF-100UG	1 mg/ml in 1X PBS; BSA free, sodium azide free	100 ug

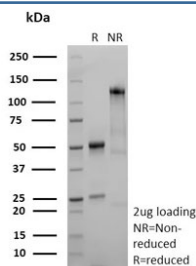
Recombinant **RABBIT MONOCLONAL**

[Bulk quote request](#)

Availability	1-3 business days
Species Reactivity	Human
Format	Purified
Clonality	Recombinant Rabbit Monoclonal
Isotype	Rabbit IgG, kappa
Clone Name	STMN1/9227R
Purity	Protein A/G affinity
UniProt	P16949
Localization	Cytoplasm, Cytoskeleton
Applications	Immunohistochemistry (FFPE) : 1-2ug/ml
Limitations	This recombinant Stathmin 1 antibody is available for research use only.



IHC staining of FFPE human colon carcinoma tissue with recombinant Stathmin 1 antibody (clone STMN1/9227R). Inset: PBS used in place of primary Ab (secondary Ab negative control). HIER: boil tissue sections in pH 9 10mM Tris with 1mM EDTA for 20 min and allow to cool before testing.



SDS-PAGE analysis of purified, BSA-free recombinant Stathmin 1 antibody (clone STMN1/9227R) as confirmation of integrity and purity.

Description

Stathmin 1 (Oncoprotein 18, STM1, prosolin or metablastin) is a conserved, Tubulin-associated, intracellular phosphoprotein. Many different phosphorylated forms of the protein are observed, and it is expressed as two different isoforms. Stathmin 1 is considered a critical regulator of microtubulin dynamics and is downregulated by p53. It serves as a transducing protein, via phosphorylation, for a variety of cell signaling pathways and is involved in both mitosis and differentiation. It is present in many cancers, including breast carcinomas, and is highly expressed in acute leukemias of different subtypes.

Application Notes

Optimal dilution of the recombinant Stathmin 1 antibody should be determined by the researcher.

Immunogen

A recombinant fragment (within amino acids 1-148) of human STMN1 protein was used as the immunogen for the recombinant Stathmin 1 antibody.

Storage

Aliquot the recombinant Stathmin 1 antibody and store frozen at -20oC or colder. Avoid repeated freeze-thaw cycles.