

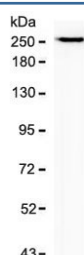
Recombinant SPTBN2 Antibody / Spectrin beta III [clone SCNB3-2R] (V7447)

Catalog No.	Formulation	Size
V7447-100UG	0.2 mg/ml in 1X PBS with 0.1 mg/ml BSA (US sourced) and 0.05% sodium azide	100 ug
V7447-20UG	0.2 mg/ml in 1X PBS with 0.1 mg/ml BSA (US sourced) and 0.05% sodium azide	20 ug
V7447SAF-100UG	1 mg/ml in 1X PBS; BSA free, sodium azide free	100 ug
V7447IHC-7ML	Prediluted in 1X PBS with 0.1 mg/ml BSA (US sourced) and 0.05% sodium azide; *For IHC use only*	7 ml

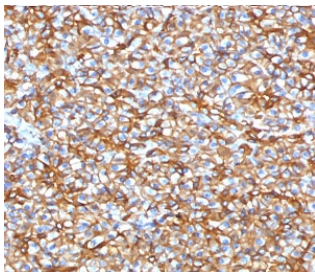
Recombinant **RABBIT MONOCLONAL**

[Bulk quote request](#)

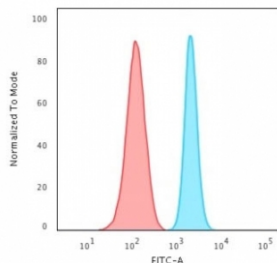
Species Reactivity	Human
Format	Purified
Clonality	Recombinant Rabbit Monoclonal
Isotype	Rabbit IgG, kappa
Clone Name	SCNB3-2R
Purity	Protein A affinity chromatography
UniProt	O15020
Localization	Cell surface, cytoplasm
Applications	Western Blot : 1-2ug/ml Flow Cytometry : 1-2ug/10 ⁶ cells in 0.1ml Immunohistochemistry (FFPE) : 1-2ug/ml for 30 min at RT Prediluted IHC Only Format : incubate for 30 min at RT (1)
Limitations	This recombinant SPTBN2 antibody is available for research use only.



Western blot testing of human PANC-1 cell lysate with recombinant SPTBN2 antibody (clone SCNB3-2R). Predicted molecular weight ~246 kDa.



IHC testing of FFPE human pancreas with recombinant SPTBN2 antibody (clone SCNB3-2R). Required HIER: boil tissue sections in pH 9 10mM Tris with 1mM EDTA for 10-20 min followed by cooling at RT for 20 min.



FACS testing of fixed and permeabilized human HeLa cells with recombinant SPTBN2 antibody (blue) and isotype control (red).

Description

Spectrins are principle components of a cell's membrane-cytoskeleton and are composed of two alpha and two beta spectrin subunits. The protein encoded by this gene (SPTBN2), is called spectrin beta non-erythrocytic 2 or beta-III spectrin. It is related to, but distinct from, the beta-II spectrin gene which is also known as spectrin beta non-erythrocytic 1 (SPTBN1). SPTBN2 regulates the glutamate signaling pathway by stabilizing the glutamate transporter EAAT4 at the surface of the plasma membrane. Mutations in this gene cause a form of spinocerebellar ataxia, SCA5, that is characterized by neurodegeneration, progressive locomotor incoordination, dysarthria, and uncoordinated eye movements. [RefSeq]

Application Notes

Optimal dilution of the recombinant SPTBN2 antibody should be determined by the researcher.

1. The prediluted format is supplied in a dropper bottle and is optimized for use in IHC. After epitope retrieval step (if required), drip mAb solution onto the tissue section and incubate at RT for 30 min.

Immunogen

Amino acids 356-475 from the human protein were used as the immunogen for this recombinant SPTBN2 antibody.

Storage

Store the recombinant SPTBN2 antibody at 2-8oC (with azide) or aliquot and store at -20oC or colder (without azide).

References (2)