

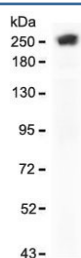
## Recombinant SPTA1 Antibody / Spectrin alpha 1 [clone SCNA-1R] (V7423)

| Catalog No.    | Formulation   | Size   |
|----------------|---|--------|
| V7423-100UG    | 0.2 mg/ml in 1X PBS with 0.1 mg/ml BSA (US sourced) and 0.05% sodium azide                      | 100 ug |
| V7423-20UG     | 0.2 mg/ml in 1X PBS with 0.1 mg/ml BSA (US sourced) and 0.05% sodium azide                      | 20 ug  |
| V7423SAF-100UG | 1 mg/ml in 1X PBS; BSA free, sodium azide free  | 100 ug |
| V7423IHC-7ML   | Prediluted in 1X PBS with 0.1 mg/ml BSA (US sourced) and 0.05% sodium azide; *For IHC use only* | 7 ml   |

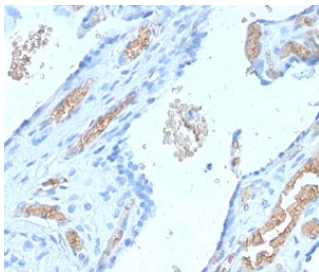
Recombinant **MOUSE MONOCLONAL**

[Bulk quote request](#)

|                           |  |
|---------------------------|--|
| <b>Availability</b>       | 1-3 business days  |
| <b>Species Reactivity</b> | Human  |
| <b>Format</b>             | Purified   |
| <b>Clonality</b>          | Recombinant Mouse Monoclonal   |
| <b>Isotype</b>            | Mouse IgG1, kappa  |
| <b>Clone Name</b>         | SCNA-1R  |
| <b>Purity</b>             | Protein G affinity chromatography  |
| <b>UniProt</b>            | P02549   |
| <b>Localization</b>       | Cytoplasmic, cell surface  |
| <b>Applications</b>       | Western Blot : 1-2ug/ml<br>Immunohistochemistry (FFPE) : 1-2ug/ml for 30 min at RT<br>Prediluted IHC Only Format : incubate for 30 min at RT (1) |
| <b>Limitations</b>        | This recombinant SPTA1 antibody is available for research use only.  |



Western blot testing of human Hela cell lysate with recombinant SPTA1 antibody (clone SCNA-1R). Expected molecular weight: 260-280 kDa.



IHC staining of FFPE human placenta with recombinant Spectrin alpha 1 antibody (clone SCNA-1R). Required HIER: boil tissue sections in pH 9 10mM Tris with 1mM EDTA for 10-20 min followed by cooling at RT for 20 min.

## Description

This gene encodes a member of a family of molecular scaffold proteins that link the plasma membrane to the actin cytoskeleton and functions in the determination of cell shape, arrangement of transmembrane proteins, and organization of organelles. The encoded protein is primarily composed of 22 spectrin repeats which are involved in dimer formation. It forms a component of the erythrocyte plasma membrane. Mutations in this gene result in a variety of hereditary red blood cell disorders, including elliptocytosis-2, pyropoikilocytosis, and spherocytosis, type 3. [RefSeq]

## Application Notes

The stated application concentrations are suggested starting points. Titration of the recombinant SPTA1 antibody may be required due to differences in protocols and secondary/substrate sensitivity.

1. The prediluted format is supplied in a dropper bottle and is optimized for use in IHC. After epitope retrieval step (if required), drip mAb solution onto the tissue section and incubate at RT for 30 min.

## Immunogen

A portion of amino acids 356-475 from the human protein was used as the immunogen for the recombinant SPTA1 antibody.

## Storage

Store the recombinant SPTA1 antibody at 2-8°C (with azide) or aliquot and store at -20°C or colder (without azide).