

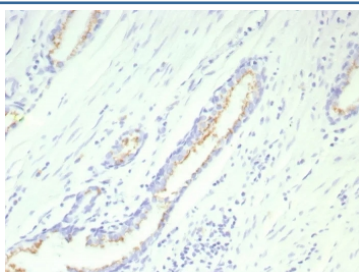
Recombinant SLC45A3 Antibody / Prostein [clone SLC45A3/9216R] (V5612)

Catalog No.	Formulation	Size
V5612-100UG	0.2 mg/ml in 1X PBS with 0.1 mg/ml BSA (US sourced), 0.05% sodium azide	100 ug
V5612-20UG	0.2 mg/ml in 1X PBS with 0.1 mg/ml BSA (US sourced), 0.05% sodium azide	20 ug
V5612SAF-100UG	1 mg/ml in 1X PBS; BSA free, sodium azide free	100 ug

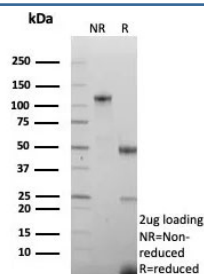
Recombinant **RABBIT MONOCLONAL**

[Bulk quote request](#)

Availability	1-3 business days
Species Reactivity	Human
Format	Purified
Clonality	Recombinant Rabbit Monoclonal
Isotype	Rabbit IgG, kappa
Clone Name	SLC45A3/9216R
Purity	Protein A/G affinity
UniProt	Q96JT2
Localization	Membrane
Applications	Immunohistochemistry (FFPE) : 1-2ug/ml
Limitations	This recombinant SLC45A3 antibody is available for research use only.



IHC staining of FFPE human prostate tissue with recombinant SLC45A3 antibody (clone SLC45A3/9216R). HIER: boil tissue sections in pH 9 10mM Tris with 1mM EDTA for 20 min and allow to cool before testing.



SDS-PAGE analysis of purified, BSA-free recombinant SLC45A3 antibody (clone SLC45A3/9216R) as confirmation of integrity and purity.

Description

Human prostein is a 553 aa protein identified by cDNA library subtraction and subsequent high throughput microarray screening of prostate cancer. Prostein has multiple transmembrane domains. Prostein has been shown to be uniquely expressed in normal and cancerous prostatic tissues. By immunohistochemistry, prostein is expressed in the vast majority of normal and malignant prostatic tissues, regardless of grade and metastatic status. No protein expression is detected in normal and malignant tissue samples representing the great majority of essential tissues and tumors. In particular, prostein is expressed in most of poorly differentiated prostatic carcinoma, including small cell prostate carcinoma. Prostein is more specific and sensitive for prostatic carcinomas than PSA and PSAP.

Application Notes

Optimal dilution of the recombinant SLC45A3 antibody should be determined by the researcher.

Immunogen

A recombinant fragment (within amino acids 300-500) of human SLC45A3 protein was used as the immunogen for the recombinant SLC45A3 antibody.

Storage

Aliquot the recombinant SLC45A3 antibody and store frozen at -20oC or colder. Avoid repeated freeze-thaw cycles.