

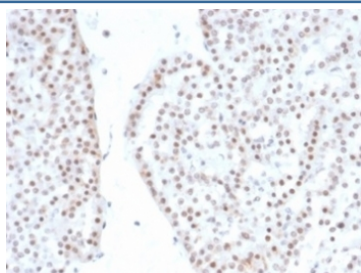
## Recombinant SF-1 Antibody / Steroidogenic Factor 1 / NR5A1 [clone NR5A1/4368R] (V9450)

Catalog No.	Formulation	Size
V9450-100UG	0.2 mg/ml in 1X PBS with 0.1 mg/ml BSA (US sourced), 0.05% sodium azide	100 ug
V9450-20UG	0.2 mg/ml in 1X PBS with 0.1 mg/ml BSA (US sourced), 0.05% sodium azide	20 ug
V9450SAF-100UG	1 mg/ml in 1X PBS; BSA free, sodium azide free	100 ug

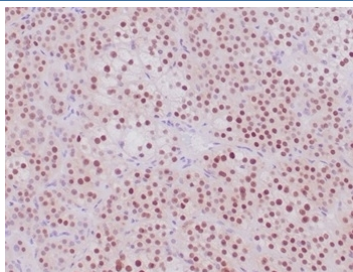
Recombinant **RABBIT MONOCLONAL**

[Bulk quote request](#)

Availability	1-3 business days
Species Reactivity	Human
Format	Purified
Clonality	Recombinant Rabbit Monoclonal
Isotype	Rabbit IgG, kappa
Clone Name	NR5A1/4368R
Purity	Protein A/G affinity
UniProt	Q13285
Localization	Nuclear
Applications	Immunohistochemistry (FFPE) : 1-2ug/ml
Limitations	This recombinant SF-1 antibody is available for research use only.



IHC staining of FFPE human renal oncocytoma with recombinant SF-1 antibody (clone NR5A1/4368R). HIER: boil tissue sections in pH 9 10mM Tris with 1mM EDTA for 20 min and allow to cool before testing.



IHC staining of FFPE human adrenal cortical tumor tissue with recombinant SF-1 antibody (clone NR5A1/4368R). HIER: boil tissue sections in pH 9 10mM Tris with 1mM EDTA for 20 min and allow to cool before testing.

## Description

Steroidogenic Factor 1 (SF-1) is considered an orphan nuclear receptor that belongs to subfamily 5. It was found to be a regulator of steroidogenic enzyme gene expression. Oxysterols are suggested as its ligands. It is expressed in all steroidogenic tissues, including the adrenal cortex, testicular Sertoli cells, and Leydig cells, ovarian theca, hypothalamus, and anterior pituitary. SF-1 plays an important role in adrenal and gonadal development. SF-1 is highly valuable marker to determine the adrenocortical origin of an adrenal mass.

## Application Notes

Optimal dilution of the recombinant SF-1 antibody should be determined by the researcher.

## Immunogen

A recombinant fragment of human SF-1 protein was used as the immunogen for the recombinant SF-1 antibody.

## Storage

Aliquot the recombinant SF-1 antibody and store frozen at -20°C or colder. Avoid repeated freeze-thaw cycles.