

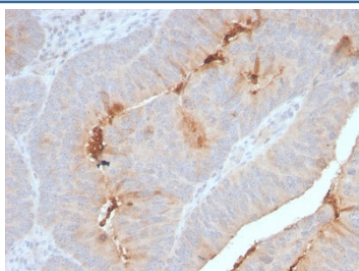
Recombinant SAA Antibody / SAA1 + SAA2 [clone SAA/2868R] (V7345)

Catalog No.	Formulation	Size
V7345-100UG	0.2 mg/ml in 1X PBS with 0.1 mg/ml BSA (US sourced) and 0.05% sodium azide	100 ug
V7345-20UG	0.2 mg/ml in 1X PBS with 0.1 mg/ml BSA (US sourced) and 0.05% sodium azide	20 ug
V7345SAF-100UG	1 mg/ml in 1X PBS; BSA free, sodium azide free	100 ug
V7345IHC-7ML	Prediluted in 1X PBS with 0.1 mg/ml BSA (US sourced) and 0.05% sodium azide; *For IHC use only*	7 ml

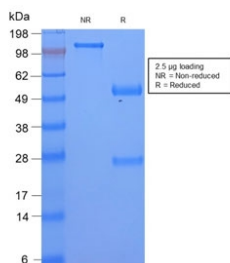
Recombinant **RABBIT MONOCLONAL**

[Bulk quote request](#)

Availability	1-3 business days
Species Reactivity	Human
Format	Purified
Clonality	Recombinant Rabbit Monoclonal
Isotype	Rabbit IgG, kappa
Clone Name	SAA/2868R
Purity	Protein A affinity chromatography
UniProt	P0DJ18, P0DJ19
Localization	Cytoplasmic, secreted
Applications	Immunohistochemistry (FFPE) : 1-2ug/ml for 30 min at RT
Limitations	This recombinant SAA antibody is available for research use only.



IHC staining of FFPE human colon carcinoma with recombinant SAA antibody. HIER: boil tissue sections in 10mM Tris with 1mM EDTA, pH 9, for 10-20 min and allow to cool before testing.



SDS-PAGE analysis of purified, BSA-free recombinant SAA antibody as confirmation of integrity and purity.

Description

This antibody reacts with natural and recombinant human Serum Amyloid A (SAA) and does not cross-react with other human cytokines or growth factors. Human SAA proteins are a group of apo-lipoproteins found predominantly in the high-density lipoprotein (HDL) fraction of plasma. SAA is a major acute-phase protein and precursor to amyloid A protein, which is the major constituent of the fibril deposits of reactive amyloidosis. SAA is secreted in large amounts by the liver during microbial infections or inflammatory diseases.

Application Notes

Optimal dilution of the recombinant SAA antibody should be determined by the researcher.

1. The prediluted format is supplied in a dropper bottle and is optimized for use in IHC. After epitope retrieval step (if required), drip mAb solution onto the tissue section and incubate at RT for 30 min.

Immunogen

Recombinant human protein was used as the immunogen for the recombinant SAA antibody.

Storage

Store the recombinant SAA antibody at 2-8°C (with azide) or aliquot and store at -20°C or colder (without azide).