

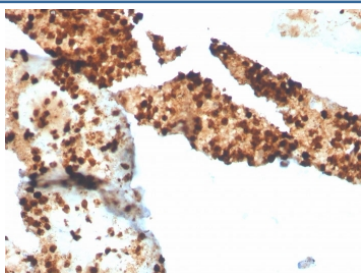
Recombinant S100P Antibody [clone S100P/4386R] (V8738)

Catalog No.	Formulation	Size
V8738-100UG	0.2 mg/ml in 1X PBS with 0.1 mg/ml BSA (US sourced) and 0.05% sodium azide	100 ug
V8738-20UG	0.2 mg/ml in 1X PBS with 0.1 mg/ml BSA (US sourced) and 0.05% sodium azide	20 ug
V8738SAF-100UG	1 mg/ml in 1X PBS; BSA free, sodium azide free	100 ug

Recombinant **RABBIT MONOCLONAL**

[Bulk quote request](#)

Availability	1-3 business days
Species Reactivity	Human
Format	Purified
Clonality	Recombinant Rabbit Monoclonal
Isotype	Rabbit IgG
Clone Name	S100P/4386R
Purity	Protein A affinity chromatography
UniProt	P25815
Localization	Nucleus, cytoplasm
Applications	Immunohistochemistry (FFPE) : 1-2ug/ml for 30 minutes at RT
Limitations	This recombinant S100P antibody is available for research use only.



IHC staining of FFPE human spleen with recombinant S100P antibody. HIER: boil tissue sections in pH 9 10mM Tris with 1mM EDTA for 20 min and allow to cool before testing.

Description

S100P is a 95-amino-acid protein and a member of the S100 family. S100P has been shown to mediate tumor growth, metastasis and invasion through the binding of Ca²⁺ ions, receptor for advanced glycation end products, cytoskeletal

protein ezrin, calcyclin-binding protein/Siah-1-interacting protein and cathepsin D. S100P highly expressed in human placenta, gastrointestinal tract, and esophageal mucosa, but always negative in pancreas and liver. Overexpression of S100P has been detected in several cancers such as breast, colon, prostate, pancreatic and lung carcinomas, and the protein has been functionally implicated in carcinogenic processes. S100P could potentially serve as diagnostic marker, prognostic/predictive indicator and therapy target for different carcinomas.

Application Notes

Optimal dilution of the recombinant S100P antibody should be determined by the researcher.

Immunogen

A recombinant fragment corresponding to the C-terminal region of human S100P protein was used as the immunogen for the recombinant S100P antibody.

Storage

Store the recombinant S100P antibody at 2-8°C (with azide) or aliquot and store at -20°C or colder (without azide).