

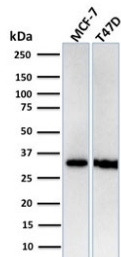
## Recombinant RPA32 Antibody / Replication Protein A2 [clone RPA2/3140R] (V7886)

Catalog No.	Formulation	Size
V7886-100UG	0.2 mg/ml in 1X PBS with 0.1 mg/ml BSA (US sourced) and 0.05% sodium azide	100 ug
V7886-20UG	0.2 mg/ml in 1X PBS with 0.1 mg/ml BSA (US sourced) and 0.05% sodium azide	20 ug
V7886SAF-100UG	1 mg/ml in 1X PBS; BSA free, sodium azide free	100 ug

Recombinant **RABBIT MONOCLONAL**

[Bulk quote request](#)

Availability	1-3 business days
Species Reactivity	Human
Format	Purified
Clonality	Recombinant Rabbit Monoclonal
Isotype	Rabbit IgG, kappa
Clone Name	RPA2/3140R
Purity	Protein A affinity chromatography
UniProt	P15927
Applications	Western Blot : 1-2ug/ml
Limitations	This recombinant RPA32 antibody is available for research use only.



Western blot testing of human MCF7 and T47D cell lysate with recombinant RPA32 antibody. Expected molecular weight ~32 kDa.

### Description

Recognizes a protein of 34kDa, identified as a subunit of Replication Protein A (RPA) (also known as human single-stranded DNA binding protein, or HSSB). RPA from human cells is a stable heterotrimer of 70kDa, 32-34kDa, and

11-14kDa subunits (RPA70, RPA32, and RPA14 respectively). It is involved in DNA replication, repair, and recombination. RPA is required for the SV40 large tumor antigen-catalyzed unwinding of SV40 DNA and stimulates DNA polymerase (pol) alpha and delta. RPA34 is phosphorylated at the G1/S boundary of the cell cycle or upon exposure of cells to DNA damage-inducing agents including ionizing and UV radiation.

## **Application Notes**

Optimal dilution of the recombinant RPA32 antibody should be determined by the researcher.

## **Immunogen**

A recombinant human full-length Replication protein A2 protein was used as the immunogen for this recombinant RPA32 antibody.

## **Storage**

Store the recombinant RPA32 antibody at 2-8oC (with azide) or aliquot and store at -20oC or colder (without azide).