

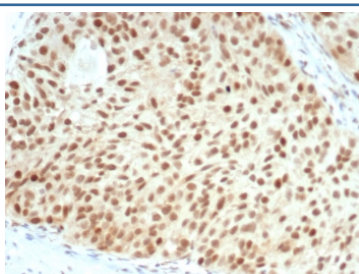
## Recombinant Retinoblastoma Antibody [clone RB1/7080R] (V4327)

Catalog No.	Formulation	Size
V4327-100UG	0.2 mg/ml in 1X PBS with 0.1 mg/ml BSA (US sourced), 0.05% sodium azide	100 ug
V4327-20UG	0.2 mg/ml in 1X PBS with 0.1 mg/ml BSA (US sourced), 0.05% sodium azide	20 ug
V4327SAF-100UG	1 mg/ml in 1X PBS; BSA free, sodium azide free	100 ug

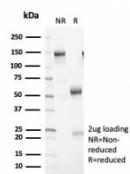
Recombinant **RABBIT MONOCLONAL**

[Bulk quote request](#)

<b>Availability</b>	1-3 business days
<b>Species Reactivity</b>	Human
<b>Format</b>	Purified
<b>Clonality</b>	Recombinant Rabbit Monoclonal
<b>Isotype</b>	Rabbit IgG, kappa
<b>Clone Name</b>	RB1/7080R
<b>Purity</b>	Protein A/G affinity
<b>UniProt</b>	P06400
<b>Localization</b>	Nucleus
<b>Applications</b>	Immunohistochemistry (FFPE) : 1-2ug/ml for 30 minutes at RT
<b>Limitations</b>	This recombinant Retinoblastoma antibody is available for research use only.



IHC staining of FFPE human bladder carcinoma with recombinant Retinoblastoma antibody (clone RB1/7080R). HIER: boil tissue sections in pH 9 10mM Tris with 1mM EDTA for 20 min and allow to cool before testing.



SDS-PAGE analysis of purified, BSA-free recombinant Retinoblastoma antibody (clone RB1/7080R) as confirmation of integrity and purity.

## Description

Recognizes a 105kDa phosphoprotein, identified as retinoblastoma (Rb) gene product. Its epitope is localized between aa 703-772. It shows no cross reaction with p107 or p130. It specifically stains the nuclei of BT-20 cells and primary human foreskin fibroblast (HFF) cells. It does not stain the Rb-negative BT549 cells. It reacts with the hyperphosphorylated as well as the un (under) phosphorylated form of the Rb protein. Retinoblastoma gene product plays a key role in cell cycle control. It has been identified as a tumor suppressor gene whose loss of its function leads to tumor development. It is widely expressed in a variety of human tissues including breast, esophageal, squamous cell and cervical carcinoma.

## Application Notes

Optimal dilution of the recombinant Retinoblastoma antibody should be determined by the researcher.

## Immunogen

Recombinant human full-length protein was used as the immunogen for the recombinant Retinoblastoma antibody.

## Storage

Aliquot the recombinant Retinoblastoma antibody and store frozen at -20oC or colder. Avoid repeated freeze-thaw cycles.