

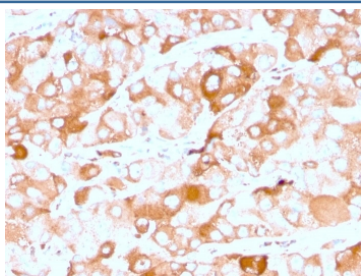
Recombinant Prolactin Receptor Antibody / PRLR [clone rPRLR/742] (V8036)

Catalog No.	Formulation	Size
V8036-100UG	0.2 mg/ml in 1X PBS with 0.1 mg/ml BSA (US sourced) and 0.05% sodium azide	100 ug
V8036-20UG	0.2 mg/ml in 1X PBS with 0.1 mg/ml BSA (US sourced) and 0.05% sodium azide	20 ug
V8036SAF-100UG	1 mg/ml in 1X PBS; BSA free, sodium azide free	100 ug

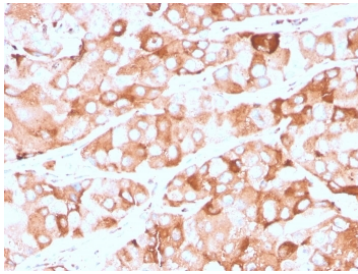
Recombinant **MOUSE MONOCLONAL**

[Bulk quote request](#)

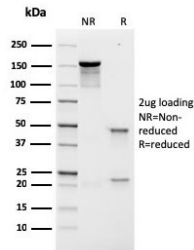
Availability	1-3 business days
Species Reactivity	Human
Format	Purified
Clonality	Recombinant Mouse Monoclonal
Isotype	Mouse IgG1, kappa
Clone Name	rPRLR/742
Purity	Protein G affinity chromatography
UniProt	P16471
Localization	Cell surface, cytoplasmic
Applications	Immunohistochemistry (FFPE) : 1-2ug/ml (not suitable for frozen tissues)
Limitations	This recombinant Prolactin Receptor antibody is available for research use only.



IHC staining of FFPE human breast carcinoma with recombinant Prolactin Receptor antibody (clone rPRLR/742). HIER: boil tissue sections in pH 9 10mM Tris with 1mM EDTA for 20 min and allow to cool before testing.



IHC staining of FFPE human breast carcinoma with recombinant Prolactin Receptor antibody (clone rPRLR/742). HIER: boil tissue sections in pH 9 10mM Tris with 1mM EDTA for 20 min and allow to cool before testing.



SDS-PAGE analysis of purified, BSA-free recombinant Prolactin Receptor antibody (clone rPRLR/742) as confirmation of integrity and purity.

Description

It recognizes a protein of 70kDa, identified as prolactin receptor. Prolactin is a pituitary hormone involved in the stimulation of milk production, salt and water regulation, growth, development and reproduction. The initial step in its action is the binding to a specific membrane receptor (prolactin receptor), which belongs to the superfamily of class 1 cytokine receptors. The function of the prolactin receptor is mediated, at least in part, by two families of signaling molecules: Janus kinases and signal transducers and activators of transcription.

Application Notes

Optimal dilution of the recombinant Prolactin Receptor antibody should be determined by the researcher.

Immunogen

A recombinant full-length human protein was used as the immunogen for this recombinant Prolactin Receptor antibody.

Storage

Store the recombinant Prolactin Receptor antibody at 2-8°C (with azide) or aliquot and store at -20°C or colder (without azide).