

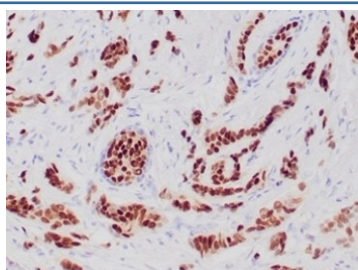
Recombinant Progesterone Receptor Antibody [clone PGR/6854R] (V8885)

Catalog No.	Formulation	Size
V8885-100UG	0.2 mg/ml in 1X PBS with 0.1 mg/ml BSA (US sourced), 0.05% sodium azide	100 ug
V8885-20UG	0.2 mg/ml in 1X PBS with 0.1 mg/ml BSA (US sourced), 0.05% sodium azide	20 ug
V8885SAF-100UG	1 mg/ml in 1X PBS; BSA free, sodium azide free	100 ug

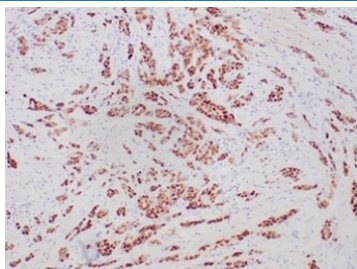
Recombinant **RABBIT MONOCLONAL**

[Bulk quote request](#)

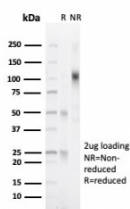
Availability	1-3 business days
Species Reactivity	Human
Format	Purified
Clonality	Recombinant Rabbit Monoclonal
Isotype	Rabbit IgG, kappa
Clone Name	PGR/6854R
Purity	Protein A/G affinity
UniProt	P06401
Localization	Nucleus
Applications	Immunohistochemistry (FFPE) : 1-2ug/ml
Limitations	This recombinant Progesterone Receptor antibody is available for research use only.



IHC staining of FFPE human breast carcinoma tissue with recombinant Progesterone Receptor antibody (clone PGR/6854R). HIER: boil tissue sections in pH 9 10mM Tris with 1mM EDTA for 20 min and allow to cool before testing.



IHC staining of FFPE human breast carcinoma tissue with recombinant Progesterone Receptor antibody (clone PGR/6854R). HIER: boil tissue sections in pH 9 10mM Tris with 1mM EDTA for 20 min and allow to cool before testing.



SDS-PAGE analysis of purified, BSA-free recombinant Progesterone Receptor antibody (clone PGR/6854R) as confirmation of integrity and purity.

Description

Progesterone is one of the central regulators of female reproduction. In breast development, progesterone is involved in the formation of lobular-alveolar structures and also affects differentiation in the breast by modulation of milk protein synthesis. The cellular effects of progesterone are mediated through progesterone receptors (PR). PR, a protein with 946 amino acids, is a ligand-activated transcription factor member of the steroid receptor super family of nuclear receptors. PR is predominantly expressed in female sex steroid responsive tissues such as the mammary gland, uterus and ovary but is also found in other tissues such as endocrine cells of the Langerhans islets. The estrogen receptor (ER) and PR status has been used for over 20 years as a predictor of breast carcinoma responsiveness to endocrine therapy and as a prognostic indicator for early recurrence.

Application Notes

Optimal dilution of the recombinant Progesterone Receptor antibody should be determined by the researcher.

Immunogen

A portion of amino acids 400-600 was used as the immunogen for the recombinant Progesterone Receptor antibody.

Storage

Aliquot the recombinant Progesterone Receptor antibody and store frozen at -20oC or colder. Avoid repeated freeze-thaw cycles.