

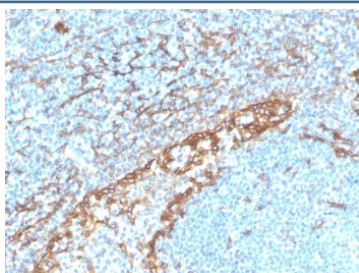
Recombinant Podoplanin Antibody [clone PDPN/4009R] (V8695)

Catalog No.	Formulation	Size
V8695-100UG	0.2 mg/ml in 1X PBS with 0.1 mg/ml BSA (US sourced) and 0.05% sodium azide	100 ug
V8695-20UG	0.2 mg/ml in 1X PBS with 0.1 mg/ml BSA (US sourced) and 0.05% sodium azide	20 ug
V8695SAF-100UG	1 mg/ml in 1X PBS; BSA free, sodium azide free	100 ug

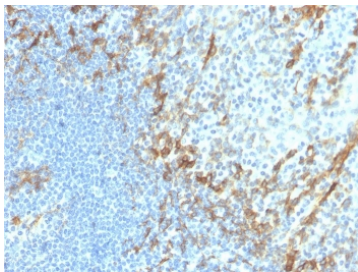
Recombinant **RABBIT MONOCLONAL**

[Bulk quote request](#)

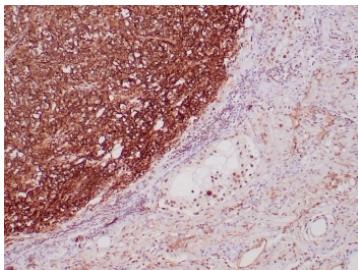
Availability	1-3 business days
Species Reactivity	Human
Format	Purified
Clonality	Recombinant Rabbit Monoclonal
Isotype	Rabbit IgG
Clone Name	PDPN/4009R
Purity	Protein A affinity chromatography
UniProt	Q86YL7
Localization	Cell surface, cytoplasmic
Applications	ELISA (order Ab Without BSA For Coating) : Western Blot : 2-4ug/ml Immunohistochemistry (FFPE) : 1-2ug/ml for 30 minutes at RT
Limitations	This recombinant Podoplanin antibody is available for research use only.



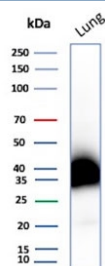
IHC staining of FFPE human tonsil with recombinant Podoplanin antibody (clone PDPN/4009R). HIER: boil tissue sections in pH 9 10mM Tris with 1mM EDTA for 20 min and allow to cool before testing.



IHC staining of FFPE human tonsil with recombinant Podoplanin antibody (clone PDPN/4009R). HIER: boil tissue sections in pH 9 10mM Tris with 1mM EDTA for 20 min and allow to cool before testing.



IHC staining of FFPE human seminoma tissue with recombinant Podoplanin antibody (clone PDPN/4009R). HIER: boil tissue sections in pH 9 10mM Tris with 1mM EDTA for 20 min and allow to cool before testing.



Western blot testing of human lung tissue lysate with recombinant Podoplanin antibody. Predicted molecular weight ~25 kDa but may be observed at higher molecular weights due to glycosylation.

Description

It recognizes a muco-protein of 38-43kDa, which is identified as Podoplanin (PDPN). It localizes in stromal cells of peripheral lymphoid tissue and thymic epithelial cells. As a regulator of the lymphatic endothelium, podoplanin probably plays a role in maintaining the unique shape of podocytes. It is selectively expressed in lymphatic endothelium as well as lymphoangiomas, Kaposi sarcomas, and in a subset of angiosarcomas with probable lymphatic differentiation. Recent studies have also shown podoplanin to be a highly sensitive and relatively specific marker for epithelioid mesothelioma. Therefore, it can be used in a panel to distinguish mesotheliomas or mesothelial cells from pulmonary carcinomas.

Application Notes

Optimal dilution of the recombinant Podoplanin antibody should be determined by the researcher.

Immunogen

A portion of amino acids 1-100 from the human protein was used as the immunogen for the recombinant Podoplanin antibody.

Storage

Store the recombinant Podoplanin antibody at 2-8oC (with azide) or aliquot and store at -20oC or colder (without azide).

