

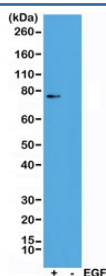
Recombinant phospho-RSK1 Antibody (Thr359/Ser363) [clone RM233] (R20260)

Catalog No.	Formulation	Size
R20260-0.1ML	Antibody in PBS with 50% glycerol, 1% BSA and 0.09% sodium azide	100 ul

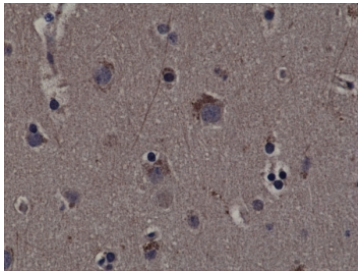
Recombinant **RABBIT MONOCLONAL**

[Bulk quote request](#)

Availability	1-3 business days
Species Reactivity	Human
Format	Purified
Clonality	Recombinant Rabbit Monoclonal
Isotype	Rabbit IgG
Clone Name	RM233
Purity	Protein A purified from animal origin-free supernatant
UniProt	Q15418
Gene ID	6195
Localization	Nuclear, cytoplasmic
Applications	Immunohistochemistry (FFPE) : 1:200-1:500 (1) Western Blot : 1:1000-1:2000
Limitations	This recombinant phospho-RSK1 antibody is available for research use only.



Western blot of A431 cells treated (+) or untreated (-) with EGF, using recombinant phospho-RSK1 antibody at 1:1000. Predicted molecular weight: 83-90 kDa.



IHC testing of FFPE human cerebral cortex tissue with recombinant phospho-RSK1 antibody.

Description

This recombinant phospho-RSK1 antibody reacts to human RSK1 only when phosphorylated at Thr359/Ser363.

Application Notes

The stated application concentrations are suggested starting points. Titration of the recombinant phospho-RSK1 antibody may be required due to differences in protocols and secondary/substrate sensitivity.

1. A pH6 Citrate buffer or pH9 Tris/EDTA buffer HIER step is recommended for testing of FFPE tissue sections.

Immunogen

A phospho-peptide corresponding to human phospho-Rsk1 (Thr359/Ser363) was used as the immunogen for this recombinant phospho-RSK1 antibody.

Storage

Store the recombinant phospho-RSK1 antibody at -20oC (with glycerol) or aliquot and store at -20oC (without glycerol).