

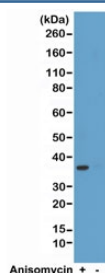
Recombinant phospho-p38 Antibody (Thr180/Tyr182) [clone RM243] (R20264)

Catalog No.	Formulation	Size
R20264-0.1ML	Antibody in PBS with 50% glycerol, 1% BSA and 0.09% sodium azide	100 ul

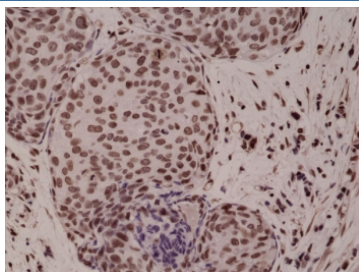
Recombinant **RABBIT MONOCLONAL**

[Bulk quote request](#)

Availability	1-3 business days
Species Reactivity	Human
Format	Purified
Clonality	Recombinant Rabbit Monoclonal
Isotype	Rabbit IgG
Clone Name	RM243
Purity	Protein A purified from animal origin-free supernatant
UniProt	Q16539
Gene ID	1432
Localization	Nuclear, cytoplasmic
Applications	Immunohistochemistry (FFPE) : 1:500-1:1000 (1) Western Blot : 1:1000-1:2000
Limitations	This recombinant phospho-p38 antibody is available for research use only.



Western blot test of HeLa cell lysate, treated or untreated with anisomycin, using recombinant phospho-p38 antibody at 1:2000.



IHC testing of FFPE human breast cancer tissue with recombinant phospho-p38 antibody at 1:1000.

Description

This recombinant phospho-p38 antibody reacts to p38 MAPK only when dual phosphorylation at Thr180 and Tyr182 is observed. There is no cross-reactivity with p38 MAPK without dual phosphorylation at Thr180 and Tyr182.

Application Notes

The stated application concentrations are suggested starting points. Titration of the recombinant phospho-p38 antibody may be required due to differences in protocols and secondary/substrate sensitivity.

1. A pH6 Citrate buffer or pH9 Tris/EDTA buffer HIER step is recommended for testing of FFPE tissue sections.

Immunogen

A phospho-peptide corresponding to human phospho-p38 MAPK (Thr180/Tyr182) was used as the immunogen for this recombinant phospho-p38 antibody.

Storage

Store the recombinant phospho-p38 antibody at -20oC (with glycerol) or aliquot and store at -20oC (without glycerol).