

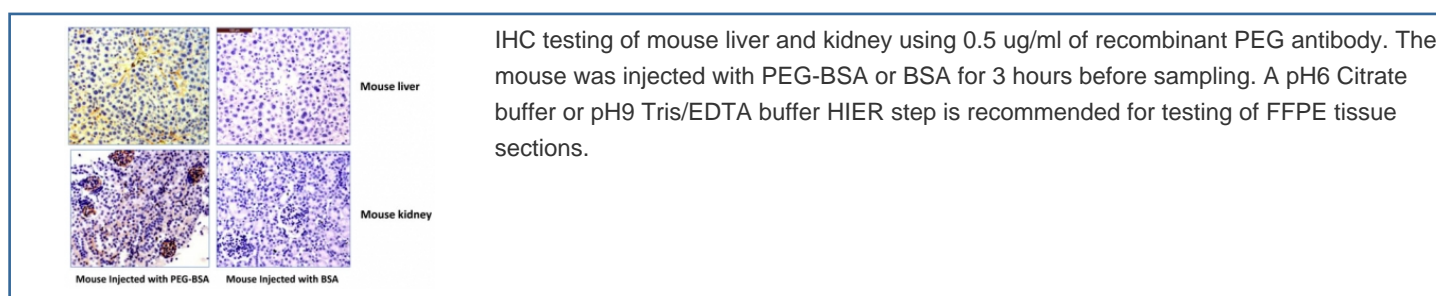
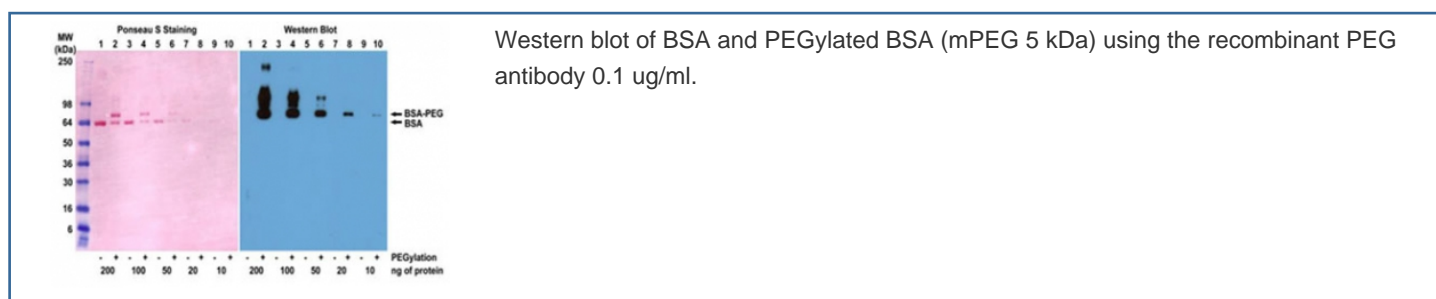
Recombinant PEG Antibody (Methoxy group) Biotin Conjugate [clone RM105] (R20194BTN)

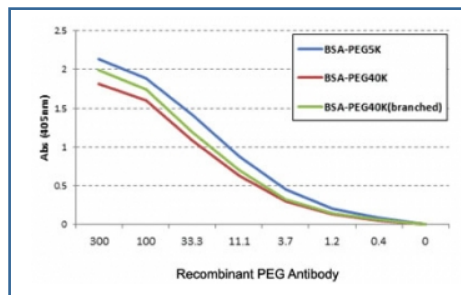
Catalog No.	Formulation	Size
R20194BTN-50UG	1 mg/ml in PBS with 50% glycerol, 1% BSA and 0.09% sodium azide	50 ug

Recombinant **RABBIT MONOCLONAL**

[Bulk quote request](#)

Availability	1-3 business days
Species Reactivity	All Species
Format	Biotin Conjugate
Clonality	Recombinant Rabbit Monoclonal
Isotype	Rabbit IgG
Clone Name	RM105
Purity	Protein A purified from animal origin-free supernatant
Gene ID	N/A
Applications	ELISA : 0.02ug/ml-0.5ug/ml Immunohistochemistry : 0.5-2ug/ml Western Blot : 0.1-1ug/ml
Limitations	This recombinant PEG antibody is available for research use only.





ELISA of three different PEGylated BSAs using the recombinant PEG antibody.

Description

This recombinant PEG antibody reacts to the methoxy group of Polyethylene glycol (PEG). It is specific for methoxypoly(ethylene glycol).

Application Notes

The stated application concentrations are suggested starting points. Titration of the recombinant PEG antibody may be required due to differences in protocols and secondary/substrate sensitivity.

Immunogen

KLH-PEG with terminal methoxy group was used as the immunogen for this recombinant PEG antibody.

Storage

Store the recombinant PEG antibody at -20°C.