

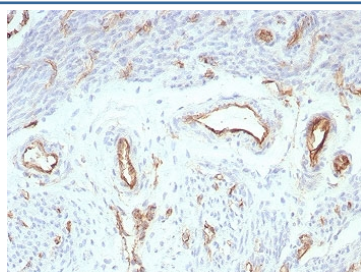
Recombinant PECAM-1 Antibody / CD31 [clone rPECAM1/8827] (V4532)

Catalog No.	Formulation	Size
V4532-100UG	0.2 mg/ml in 1X PBS with 0.1 mg/ml BSA (US sourced), 0.05% sodium azide	100 ug
V4532-20UG	0.2 mg/ml in 1X PBS with 0.1 mg/ml BSA (US sourced), 0.05% sodium azide	20 ug
V4532SAF-100UG	1 mg/ml in 1X PBS; BSA free, sodium azide free	100 ug

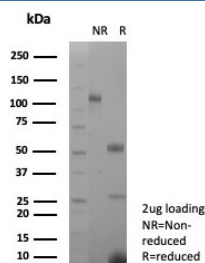
Recombinant **MOUSE MONOCLONAL**

[Bulk quote request](#)

Availability	1-3 business days
Species Reactivity	Human
Format	Purified
Clonality	Recombinant Mouse Monoclonal
Isotype	Mouse IgG1, kappa
Clone Name	rPECAM1/8827
Purity	Protein A/G affinity
UniProt	P16284
Localization	Cell surface, Cytoplasm
Applications	Immunohistochemistry (FFPE) : 1-2ug/ml for 30 min at RT
Limitations	This recombinant PECAM-1 antibody is available for research use only.



IHC staining of FFPE human uterus tissue with recombinant PECAM-1 antibody (clone rPECAM1/8827). HIER: boil tissue sections in pH 9 10mM Tris with 1mM EDTA for 20 min and allow to cool before testing.



SDS-PAGE analysis of purified, BSA-free recombinant PECAM-1 antibody (clone rPECAM1/8827) as confirmation of integrity and purity.

Description

CD31 (PECAM-1) is a transmembrane glycoprotein member of the immunoglobulin supergene family of adhesion molecules. CD31 is expressed by stem cells of the hematopoietic system and is primarily used to identify and concentrate these cells for experimental studies as well as for bone marrow transplantation. Anti-CD31 has shown to be highly specific and sensitive for vascular endothelial cells. Staining of nonvascular tumors (excluding hematopoietic neoplasms) is rare. CD31 mAb reacts with normal, benign, and malignant endothelial cells which make up blood vessel lining. The level of CD31 expression can help to determine the degree of tumor angiogenesis, and a high level of CD31 expression may imply a rapidly growing tumor and potentially a predictor of tumor recurrence.

Application Notes

Optimal dilution of the recombinant PECAM-1 antibody should be determined by the researcher.

Immunogen

A recombinant partial protein sequence (within amino acids 625-738) from the human protein was used as the immunogen for the recombinant PECAM-1 antibody.

Storage

Aliquot the recombinant PECAM-1 antibody and store frozen at -20oC or colder. Avoid repeated freeze-thaw cycles.