

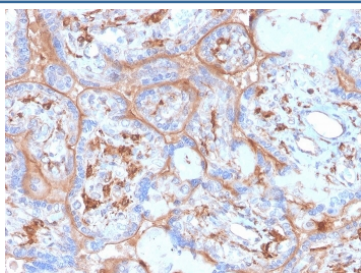
Recombinant PDL1 Antibody [clone rPDL1/4773] (V8641)

Catalog No.	Formulation	Size
V8641-100UG	0.2 mg/ml in 1X PBS with 0.1 mg/ml BSA (US sourced) and 0.05% sodium azide	100 ug
V8641-20UG	0.2 mg/ml in 1X PBS with 0.1 mg/ml BSA (US sourced) and 0.05% sodium azide	20 ug
V8641SAF-100UG	1 mg/ml in 1X PBS; BSA free, sodium azide free	100 ug

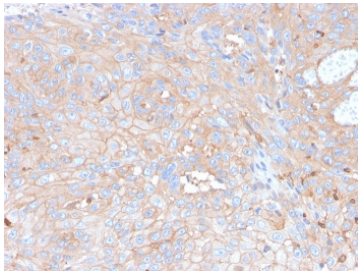
Recombinant **MOUSE MONOCLONAL**

[Bulk quote request](#)

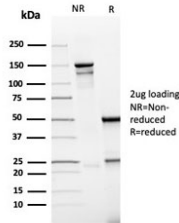
Availability	1-3 business days
Species Reactivity	Human
Format	Purified
Clonality	Recombinant Mouse Monoclonal
Isotype	Mouse IgG2a, kappa
Clone Name	rPDL1/4773
Purity	Protein G affinity chromatography
UniProt	Q9NZQ7
Localization	Cell surface, cytoplasmic
Applications	Immunohistochemistry (FFPE) : 1-2ug/ml for 30 minutes at RT Western Blot : 2-4ug/ml
Limitations	This recombinant PDL1 antibody is available for research use only.



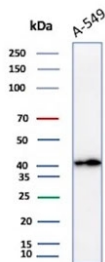
IHC staining of FFPE human placenta with recombinant PDL1 antibody (clone rPDL1/4773). HIER: boil tissue sections in pH 9 10mM Tris with 1mM EDTA for 20 min and allow to cool before testing.



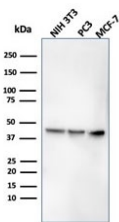
IHC staining of FFPE human skin with recombinant PDL1 antibody (clone rPDL1/4773).
HIER: boil tissue sections in pH 9 10mM Tris with 1mM EDTA for 20 min and allow to cool before testing.



SDS-PAGE analysis of purified, BSA-free recombinant PDL1 antibody (clone rPDL1/4773) as confirmation of integrity and purity.



Western blot testing of human A549 cell lysate with recombinant PDL1 antibody (clone rPDL1/4773).



Western blot testing of mouse and human cell lysates with recombinant PDL1 antibody (clone rPDL1/4773).

Description

PD-L1 is a checkpoint regulator in immune cells, it is expressed on immune or non-hematopoietic cells. Expression of the protein is seen during pregnancy where it has a role in suppressing the immune system. PD-L1 induces an inhibitory signal in activated T-cells and promotes T-cell apoptosis. It is overexpressed in a number of different cancers where it is believed to play a significant role in the cancers ability to evade the immune system.

Application Notes

Optimal dilution of the recombinant PDL1 antibody should be determined by the researcher.

Immunogen

A portion of amino acids 39-191 from the human protein was used as the immunogen for the recombinant PDL1 antibody.

Storage

Store the recombinant PDL1 antibody at 2-8°C (with azide) or aliquot and store at -20°C or colder (without azide).

