

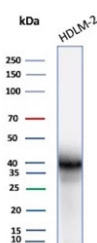
Recombinant PD-L1 Antibody / B7-H1 / CD274 [clone PDL1/8195R] (V5622)

| Catalog No. | Formulation | Size |
|----------------|-------------------------------------------------------------------------|--------|
| V5622-100UG | 0.2 mg/ml in 1X PBS with 0.1 mg/ml BSA (US sourced), 0.05% sodium azide | 100 ug |
| V5622-20UG | 0.2 mg/ml in 1X PBS with 0.1 mg/ml BSA (US sourced), 0.05% sodium azide | 20 ug |
| V5622SAF-100UG | 1 mg/ml in 1X PBS; BSA free, sodium azide free | 100 ug |

Recombinant **RABBIT MONOCLONAL**

[Bulk quote request](#)

| | |
|---------------------------|---------------------------------------------------------------------|
| Availability | 1-3 business days |
| Species Reactivity | Human |
| Format | Purified |
| Clonality | Recombinant Rabbit Monoclonal |
| Isotype | Rabbit IgG, kappa |
| Clone Name | PDL1/8195R |
| Purity | Protein A/G affinity |
| UniProt | Q9NZQ7 |
| Localization | Cytoplasm, Cell membrane |
| Applications | Immunohistochemistry (FFPE) : 1-2ug/ml Western Blot : 2-4ug/ml |
| Limitations | This recombinant PD-L1 antibody is available for research use only. |



Western blot testing of human HDLM-2 cell lysate using recombinant PD-L1 antibody (clone rCD274/8195R). Predicted molecular weight ~34 kDa (unmodified), 45-70 kDa (glycosylated).

Description

PD-L1 is a checkpoint regulator in immune cells, it is expressed on immune or non-hematopoietic cells. Expression of the protein is seen during pregnancy where it has a role in suppressing the immune system. PD-L1 induces an inhibitory signal in activated T-cells and promotes T-cell apoptosis. It is overexpressed in a number of different cancers where it is

believed to play a significant role in the cancer's ability to evade the immune system.

Application Notes

Optimal dilution of the recombinant PD-L1 antibody should be determined by the researcher.

Immunogen

A recombinant fragment (within amino acids 190-290) of human CD274 protein was used as the immunogen for the recombinant PD-L1 antibody.

Storage

Aliquot the recombinant PD-L1 antibody and store frozen at -20°C or colder. Avoid repeated freeze-thaw cycles.