

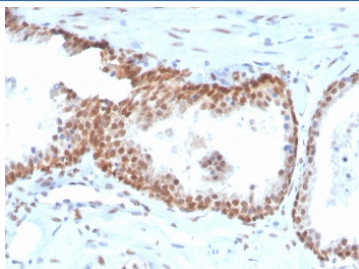
## Recombinant p40 Antibody / deltaNp63 [clone TP40/3980R] (V8628BTN)

Catalog No.	Formulation	Size
V8628BTN	0.1 mg/ml with 0.1 mg/ml BSA (US sourced), 0.05% sodium azide	500 ul

Recombinant **RABBIT MONOCLONAL**

[Bulk quote request](#)

Availability	1-3 business days
Species Reactivity	Human
Format	Biotin Conjugate
Clonality	Recombinant Rabbit Monoclonal
Isotype	Rabbit IgG
Clone Name	TP40/3980R
Purity	Protein A affinity chromatography
UniProt	Q9H3D4
Localization	Nuclear
Applications	Flow Cytometry : 2-4ug/million cells Immunofluorescence : 2-4ug/ml Immunohistochemistry (FFPE) : 2-4ug/ml for 30 minutes at RT
Limitations	This recombinant p40 antibody is available for research use only.



IHC staining of FFPE human prostate with biotinylated recombinant p40 antibody (clone TP40/3980R). HIER: boil tissue sections in pH 9 10mM Tris with 1mM EDTA for 20 min and allow to cool before testing.

### Description

p63 consists of two major isoforms-TAp63 and delta-Np63. These isoforms differ in the structure of the N-terminal domains. The TAp63 isoform (identified by anti-p63 antibody) contains a transactivation-competent TA domain with homology to p53, which regulates the expression of the growth-inhibitory genes. In contrast, DNp63 isoform (identified by anti-p40 antibody) contains an alternative transcriptionally-inactive delta-N domain, which antagonizes the activity of TAp63 and p53. P40/3980R recognizes exclusively delta-Np63 but not TAp63. p40 is a squamous cell carcinoma specific

antibody. It reacts with the vast majority of cases of squamous cell carcinomas of various origins, but not with adenocarcinomas. It is particularly useful in differentiating lung squamous cell carcinoma from lung poorly differentiated adenocarcinoma. p40 antibody can also be used as an alternative basal cell/myoepithelial cell marker, which has similar sensitivity and specificity as that of p63 antibody. Therefore, p40 antibody may also be used as an alternative immunohistochemical marker for determining prostate adenocarcinoma vs. benign prostate glands and for determining breast intraductal carcinoma vs. invasive breast ductal carcinoma.

## Application Notes

Optimal dilution of the recombinant p40 antibody should be determined by the researcher.

## Immunogen

A synthetic peptide from the N-terminal of human p40 protein was used as the immunogen for the p40 antibody.

## Storage

Store the recombinant p40 antibody at 2-8oC (up to one month) or aliquot and store at -20oC (longer term).