

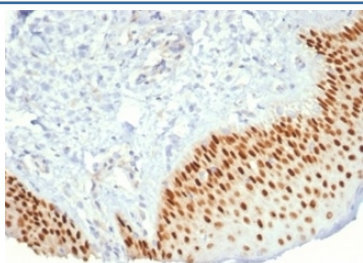
Recombinant p40 Antibody / deltaNp63 [clone P40/7302R] (V9760)

Catalog No.	Formulation	Size
V9760-100UG	0.2 mg/ml in 1X PBS with 0.1 mg/ml BSA (US sourced), 0.05% sodium azide	100 ug
V9760-20UG	0.2 mg/ml in 1X PBS with 0.1 mg/ml BSA (US sourced), 0.05% sodium azide	20 ug
V9760SAF-100UG	1 mg/ml in 1X PBS; BSA free, sodium azide free	100 ug

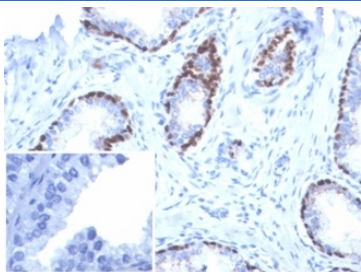
Recombinant **RABBIT MONOCLONAL**

[Bulk quote request](#)

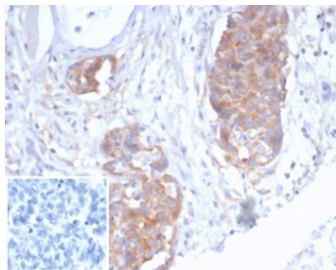
Availability	1-3 business days
Species Reactivity	Human
Format	Purified
Clonality	Recombinant Rabbit Monoclonal
Isotype	Rabbit IgG, kappa
Clone Name	P40/7302R
Purity	Protein A affinity
UniProt	Q9H3D4
Localization	Nucleus
Applications	Immunohistochemistry (FFPE) : 1-2ug/ml
Limitations	This recombinant p40 antibody is available for research use only.



IHC staining of FFPE human prostate cancer with recombinant p40 antibody (clone P40/7302R). HIER: boil tissue sections in pH 9 10mM Tris with 1mM EDTA for 20 min and allow to cool before testing.



IHC staining of FFPE human prostate cancer tissue with recombinant p40 antibody (clone P40/7302R). Negative control inset: PBS instead of primary antibody to control for secondary binding. HIER: boil tissue sections in pH 9 10mM Tris with 1mM EDTA for 20 min and allow to cool before testing.



IHC staining of FFPE human ovarian cancer tissue with recombinant p40 antibody (clone P40/7302R). Negative control inset: PBS instead of primary antibody to control for secondary binding. HIER: boil tissue sections in pH 9 10mM Tris with 1mM EDTA for 20 min and allow to cool before testing.

Description

p63 is a homolog of the tumor suppressor p53. It is identified in basal cells in the epithelial layers of a variety of tissues, including epidermis, cervix, urothelium, breast and prostate. p63 was detected in nuclei of the basal epithelium in normal prostate glands; however, it was not expressed in malignant tumors of the prostate. As a result, p63 has been reported as a useful marker for differentiating benign from malignant lesions in the prostate, particularly when used in combination with markers of high molecular weight cytokeratins and the prostate-specific marker AMACR (P504S). p63 has also been shown to be a sensitive marker for lung squamous cell carcinomas (SqCC), with a sensitivity of ~90%. Specificity for lung SqCC, vs. lung adenocarcinoma (LADC), is approximately 80%. In breast tissue, p63 has been identified in myoepithelial cells of normal ducts.

Application Notes

Optimal dilution of the recombinant p40 antibody should be determined by the researcher.

Immunogen

A portion of amino acids 1-200 was used as the immunogen for the recombinant p40 antibody.

Storage

Aliquot the recombinant p40 antibody and store frozen at -20oC or colder. Avoid repeated freeze-thaw cycles.