

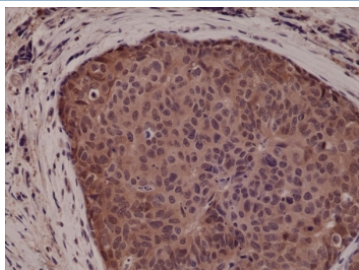
Recombinant p38 Antibody [clone RM245] (R20266)

Catalog No.	Formulation	Size
R20266-0.1ML	Antibody in PBS with 50% glycerol, 1% BSA and 0.09% sodium azide	100 ul

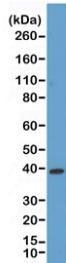
Recombinant **RABBIT MONOCLONAL**

[Bulk quote request](#)

Availability	1-3 business days
Species Reactivity	Human
Predicted Reactivity	Mouse, Rat
Format	Purified
Clonality	Recombinant Rabbit Monoclonal
Isotype	Rabbit IgG
Clone Name	RM245
Purity	Protein A purified from animal origin-free supernatant
UniProt	Q16539, Q15759, P53778
Gene ID	1432, 5600, 6300
Localization	Cytoplasmic, nuclear
Applications	Immunohistochemistry (FFPE) : 1:1000-1:5000 (1) Western Blot : 1:1000-1:2000
Limitations	This recombinant p38 antibody is available for research use only.



IHC testing of FFPE human breast cancer tissue with recombinant p38 antibody at 1:5000.



Western blot of human HeLa lysate using recombinant p38 antibody at 1:1000. Predicted molecular weight ~38 kDa.

Description

This recombinant p38 antibody reacts to human p38 MAPK. It may also react to the rat and mouse protein, as predicted by immunogen homology.

Application Notes

The stated application concentrations are suggested starting points. Titration of the recombinant p38 antibody may be required due to differences in protocols and secondary/substrate sensitivity.

Immunogen

A peptide corresponding to human p38 MAPK was used as the immunogen for this recombinant p38 antibody.

Storage

Store the recombinant p38 antibody at -20°C.