

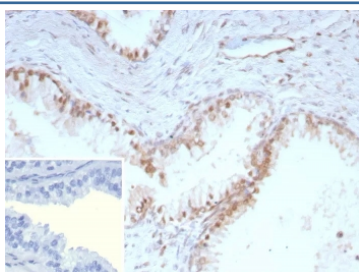
## Recombinant p27 Antibody / p27Kip1 [clone KIP1/9168R] (V5554)

Catalog No.	Formulation	Size
V5554-100UG	0.2 mg/ml in 1X PBS with 0.1 mg/ml BSA (US sourced), 0.05% sodium azide	100 ug
V5554-20UG	0.2 mg/ml in 1X PBS with 0.1 mg/ml BSA (US sourced), 0.05% sodium azide	20 ug
V5554SAF-100UG	1 mg/ml in 1X PBS; BSA free, sodium azide free	100 ug

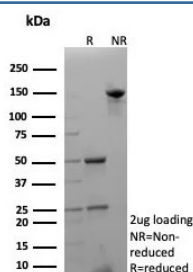
Recombinant **RABBIT MONOCLONAL**

[Bulk quote request](#)

<b>Availability</b>	1-3 business days
<b>Species Reactivity</b>	Human
<b>Format</b>	Purified
<b>Clonality</b>	Recombinant Rabbit Monoclonal
<b>Isotype</b>	Rabbit IgG, kappa
<b>Clone Name</b>	KIP1/9168R
<b>Purity</b>	Protein A/G affinity
<b>UniProt</b>	P46527
<b>Localization</b>	Nucleus
<b>Applications</b>	Immunohistochemistry (FFPE) : 1-2ug/ml
<b>Limitations</b>	This recombinant p27 antibody is available for research use only.



IHC staining of FFPE human prostate tissue. Strong nuclear staining observed using recombinant p27 antibody at 2ug/ml. HIER: boil tissue sections in pH 9 10mM Tris with 1mM EDTA for 20 min and allow to cool before testing.



SDS-PAGE analysis of purified, BSA-free recombinant p27 antibody (clone KIP1/9168R) as confirmation of integrity and purity.

## Description

p27Kip1 functions as a negative regulator of G1 progression and has been proposed to function as a possible mediator of TGF- $\beta$  induced G1 arrest. p27Kip1 is a candidate tumor suppressor gene. Reportedly, low p27 expression has been associated with unfavorable prognosis in renal cell carcinoma, colon carcinoma, breast carcinomas, non-small-cell lung carcinoma, hepatocellular carcinoma, multiple myeloma, and lymph node metastases in papillary carcinoma of the thyroid, as well as a more aggressive phenotype in carcinoma of the cervix.

## Application Notes

Optimal dilution of the recombinant p27 antibody should be determined by the researcher.

## Immunogen

Recombinant full-length human CDKN1B/p27Kip1 protein was used as the immunogen for the recombinant p27 antibody.

## Storage

Aliquot the recombinant p27 antibody and store frozen at -20°C or colder. Avoid repeated freeze-thaw cycles.