

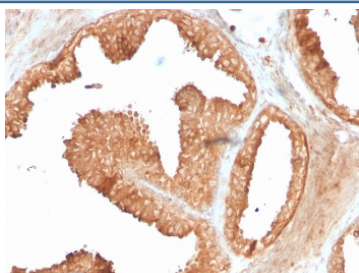
## Recombinant ODC1 Antibody / Ornithine Decarboxylase [clone ODC1/3636R] (V7990)

Catalog No.	Formulation	Size
V7990-100UG	0.2 mg/ml in 1X PBS with 0.1 mg/ml BSA (US sourced) and 0.05% sodium azide	100 ug
V7990-20UG	0.2 mg/ml in 1X PBS with 0.1 mg/ml BSA (US sourced) and 0.05% sodium azide	20 ug
V7990SAF-100UG	1 mg/ml in 1X PBS; BSA free, sodium azide free	100 ug

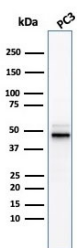
Recombinant **RABBIT MONOCLONAL**

[Bulk quote request](#)

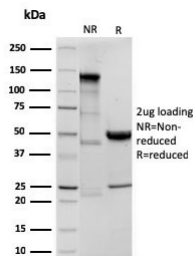
<b>Availability</b>	1-3 business days
<b>Species Reactivity</b>	Human
<b>Format</b>	Purified
<b>Clonality</b>	Recombinant Rabbit Monoclonal
<b>Isotype</b>	Rabbit IgG, kappa
<b>Clone Name</b>	ODC1/3636R
<b>Purity</b>	Protein A affinity chromatography
<b>UniProt</b>	P11926
<b>Localization</b>	Cytoplasmic
<b>Applications</b>	Immunohistochemistry (FFPE) : 0.25-0.5ug/ml Western Blot : 0.5-1ug/ml
<b>Limitations</b>	This recombinant ODC1 antibody is available for research use only.



IHC staining of FFPE human prostate carcinoma with recombinant ODC1 antibody (clone ODC1/3636R). HIER: boil tissue sections in pH 9 10mM Tris with 1mM EDTA for 20 min and allow to cool before testing.



Western blot testing of human PC-3 cell lysate with recombinant ODC1 antibody.  
Predicted molecular weight ~51 kDa.



SDS-PAGE analysis of purified, BSA-free recombinant ODC1 antibody (clone ODC1/3636R) as confirmation of integrity and purity.

## Description

Recognizes a 53kDa protein, identified as the Ornithine Decarboxylase (ODC-1). ODC is the initial and rate-limiting enzyme in the biosynthetic pathway of polyamines and is involved in the conversion of ornithine to putrescine. The biological activity of ODC-1 is rapidly induced in response to virtually all agents known to promote cell proliferation including hormones, drugs, growth factors, mitogens, and tumor promoters. Reportedly, ODC mRNA levels are elevated in lung carcinomas as well as in colon adenomas and carcinomas. ODC activity in colorectal carcinomas is greater than those in adenomas and normal mucosa.

## Application Notes

Optimal dilution of the recombinant ODC1 antibody should be determined by the researcher.

## Immunogen

Recombinant human ODC-1 protein was used as the immunogen for this recombinant ODC1 antibody.

## Storage

Store the recombinant ODC1 antibody at 2-8oC (with azide) or aliquot and store at -20oC or colder (without azide).