

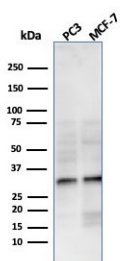
Recombinant NKX2.8 Antibody [clone NKX28/3233R] (V7858)

Catalog No.	Formulation	Size
V7858-100UG	0.2 mg/ml in 1X PBS with 0.1 mg/ml BSA (US sourced) and 0.05% sodium azide	100 ug
V7858-20UG	0.2 mg/ml in 1X PBS with 0.1 mg/ml BSA (US sourced) and 0.05% sodium azide	20 ug
V7858SAF-100UG	1 mg/ml in 1X PBS; BSA free, sodium azide free	100 ug

Recombinant **RABBIT MONOCLONAL**

[Bulk quote request](#)

Availability	1-3 business days
Species Reactivity	Human
Format	Purified
Clonality	Recombinant Rabbit Monoclonal
Isotype	Rabbit IgG, kappa
Clone Name	NKX28/3233R
Purity	Protein A affinity chromatography
UniProt	O15522
Applications	Western Blot : 1-2ug/ml
Limitations	This recombinant NKX2.8 antibody is available for research use only.



Western blot testing of human PC-3 and MCF-7 cell lysate with NKX2.8 antibody. Predicted molecular weight ~26 kDa, commonly observed at 26-34 kDa.

Description

The protein encoded by this gene is a homeobox-containing developmental regulator associated with liver development. The encoded protein binds to the alpha-fetoprotein (AFP) gene promoter and increases the expression of AFP. This gene is overexpressed in some lung cancers and is linked to poor patient survival, possibly due to its resistance to cisplatin.

This gene is aberrantly methylated in pancreatic cancer, deleted in squamous cell lung carcinomas, and acts as a tumor suppressor in esophageal cancer. Mutations in this gene may also be a cause of neural tube defects.

Application Notes

Optimal dilution of the recombinant NKX2.8 antibody should be determined by the researcher.

Immunogen

A recombinant human partial protein (amino acids 10-123) was used as the immunogen for the NKX2.8 antibody.

Storage

Store the recombinant NKX2.8 antibody at 2-8oC (with azide) or aliquot and store at -20oC or colder (without azide).