

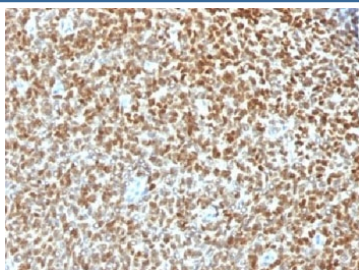
## Recombinant NKX2.2 Antibody / Rabbit Monoclonal [clone NX2/1422R] (V7271)

Catalog No.	Formulation	Size
V7271-100UG	0.2 mg/ml in 1X PBS with 0.1 mg/ml BSA (US sourced) and 0.05% sodium azide	100 ug
V7271-20UG	0.2 mg/ml in 1X PBS with 0.1 mg/ml BSA (US sourced) and 0.05% sodium azide	20 ug
V7271SAF-100UG	1 mg/ml in 1X PBS; BSA free, sodium azide free	100 ug
V7271IHC-7ML	Prediluted in 1X PBS with 0.1 mg/ml BSA (US sourced) and 0.05% sodium azide; *For IHC use only*	7 ml

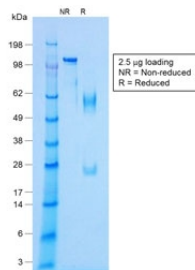
Recombinant **RABBIT MONOCLONAL**

[Bulk quote request](#)

Availability	1-3 business days
Species Reactivity	Human
Format	Purified
Clonality	Recombinant Rabbit Monoclonal
Isotype	Rabbit IgG, kappa
Clone Name	NX2/1422R
Purity	Protein A affinity chromatography
Gene ID	4821
Localization	Nuclear
Applications	Immunohistochemistry (FFPE) : 1-2ug/ml for 30 min at RT
Limitations	This recombinant NKX2.2 antibody is available for research use only.



IHC testing of FFPE Ewings sarcoma with recombinant NKX2.2 antibody (clone NX2/1422R). HIER: steam sections in pH 9 10mM Tris with 1mM EDTA for 10-20 min.



SDS-PAGE analysis of purified, BSA-free recombinant NKX2.2 antibody (clone NX2/1422R) as confirmation of integrity and purity.

## Description

Expression of NKX2.2 has been found in neuroendocrine tumors of the gut, making it a potential marker for the study of gastrointestinal neuroendocrine tumors. More recently, NKX2.2 protein was identified as a target of EWS-FLI-1, the fusion protein specific to Ewing sarcoma, and was shown to be differentially upregulated in Ewing sarcoma on the basis of array-based gene expression analysis. Antibody to NKX2.2 detects a valuable marker for Ewing sarcoma, with a sensitivity of 93% and a specificity of 89%, and aids in the differential diagnosis of small round cell tumors.

## Application Notes

Titration of the recombinant NKX2.2 antibody may be required for optimal performance.

1. The prediluted format is supplied in a dropper bottle and is optimized for use in IHC. After epitope retrieval step (if required), drip mAb solution onto the tissue section and incubate at RT for 30 min.

## Immunogen

A human partial recombinant protein was used as the immunogen for this recombinant NKX2.2 antibody.

## Storage

Store the recombinant NKX2.2 antibody at 2-8°C (with azide) or aliquot and store at -20°C or colder (without azide).