

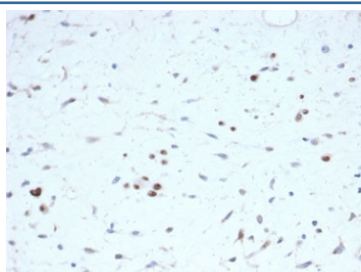
## Recombinant MyoD1 Antibody [clone rMYOD1/6911] (V8932)

Catalog No.	Formulation	Size
V8932-100UG	0.2 mg/ml in 1X PBS with 0.1 mg/ml BSA (US sourced), 0.05% sodium azide	100 ug
V8932-20UG	0.2 mg/ml in 1X PBS with 0.1 mg/ml BSA (US sourced), 0.05% sodium azide	20 ug
V8932SAF-100UG	1 mg/ml in 1X PBS; BSA free, sodium azide free	100 ug

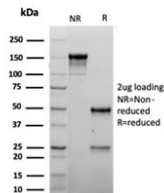
Recombinant **MOUSE MONOCLONAL**

[Bulk quote request](#)

<b>Availability</b>	1-3 business days
<b>Species Reactivity</b>	Human
<b>Format</b>	Purified
<b>Clonality</b>	Recombinant Mouse Monoclonal
<b>Isotype</b>	Mouse IgG1, kappa
<b>Clone Name</b>	rMYOD1/6911
<b>Purity</b>	Protein A affinity
<b>UniProt</b>	P15172
<b>Localization</b>	Nuclear
<b>Applications</b>	Immunohistochemistry (FFPE) : 2-4ug/ml
<b>Limitations</b>	This recombinant MyoD1 antibody is available for research use only.



IHC staining of FFPE human rhabdomyosarcoma tissue with recombinant MyoD1 antibody (clone rMYOD1/6911) at 2ug/ml. HIER: boil tissue sections in pH 9 10mM Tris with 1mM EDTA for 20 min and allow to cool before testing.



SDS-PAGE analysis of purified, BSA-free recombinant MyoD1 antibody (clone rMYOD1/6911) as confirmation of integrity and purity.

## Description

MyoD1, one of the MyoD family of myogenic helix-loop-helix transcription factors, combined with myogenin, plays a role in coordinating the myogenic differentiation pathway from the determination of mesodermal precursors into myoblasts, the differentiation of myoblasts into myotubes, and finally the maturation of myotubes into skeletal myofibers.

## Application Notes

Optimal dilution of the recombinant MyoD1 antibody should be determined by the researcher.

## Immunogen

A portion of amino acids 1-100 was used as the immunogen for the recombinant MyoD1 antibody.

## Storage

Aliquot the recombinant MyoD1 antibody and store frozen at -20oC or colder. Avoid repeated freeze-thaw cycles.