

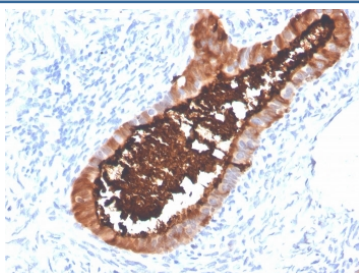
Recombinant MUC16 Antibody / CA125 [clone OCA125/4505R] (V8758)

Catalog No.	Formulation	Size
V8758-100UG	0.2 mg/ml in 1X PBS with 0.1 mg/ml BSA (US sourced) and 0.05% sodium azide	100 ug
V8758-20UG	0.2 mg/ml in 1X PBS with 0.1 mg/ml BSA (US sourced) and 0.05% sodium azide	20 ug
V8758SAF-100UG	1 mg/ml in 1X PBS; BSA free, sodium azide free	100 ug

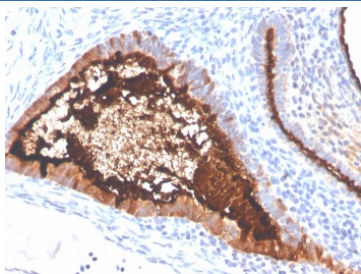
Recombinant **RABBIT MONOCLONAL**

Bulk quote request

Availability	1-3 business days
Species Reactivity	Human
Format	Purified
Clonality	Recombinant Rabbit Monoclonal
Isotype	Rabbit IgG
Clone Name	OCA125/4505R
Purity	Protein A affinity chromatography
UniProt	Q8WXI7
Localization	Cell surface, cytoplasmic, secreted
Applications	Immunohistochemistry (FFPE) : 1-2ug/ml for 30 minutes at RT
Limitations	This recombinant MUC16 antibody is available for research use only.



IHC staining of FFPE human ovarian carcinoma with recombinant MUC16 antibody (clone OCA125/4505R). HIER: boil tissue sections in pH 9 10mM Tris with 1mM EDTA for 20 min and allow to cool before testing.



IHC staining of FFPE human ovarian carcinoma with recombinant MUC16 antibody (clone OCA125/4505R). HIER: boil tissue sections in pH 9 10mM Tris with 1mM EDTA for 20 min and allow to cool before testing.

Description

CA125 also known as mucin 16, is a member of the mucin family glycoproteins. CA125 is a component of the ocular surface (including the cornea and conjunctiva), the respiratory tract and the female reproductive tract epithelia. Since CA125 is highly glycosylated it creates a hydrophilic environment that acts as a lubricating barrier against foreign particles and infectious agents on the apical membrane of epithelial cells. CA125 reacts with both normal tissues and neoplasms of fallopian tube, endometrium, endocervix and mesothelioma. It does not react with colon cancer. Normal tissues such as breast, liver, skin, kidney and spleen are also negative. Studies have shown that CA125 reacts with approximately 80% of epithelial ovarian neoplasms of serous, endometrioid, clear cell and undifferentiated types. No reactivity has been shown for mucinous ovarian tumors or in germ cell or hematopoietic tumors. This antibody is a useful aid for classification of a variety of tumors, such as some adenocarcinomas of the colon, breast carcinomas, malignant mesothelioma, uterine adenomatoid tumor, lung bronchoalveolar carcinoma, and ovarian endometrioid and serous carcinomas.

Application Notes

Optimal dilution of the recombinant MUC16 antibody should be determined by the researcher.

Immunogen

A portion of amino acids 12201-12300 from the human protein was used as the immunogen for the recombinant MUC16 antibody.

Storage

Store the recombinant MUC16 antibody at 2-8oC (with azide) or aliquot and store at -20oC or colder (without azide).