

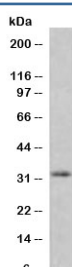
Recombinant MTAP Antibody / S-methyl-5'-thioadenosine phosphorylase [clone SMTP-1R] (V7321)

Catalog No.	Formulation	Size
V7321-100UG	0.2 mg/ml in 1X PBS with 0.1 mg/ml BSA (US sourced) and 0.05% sodium azide	100 ug
V7321-20UG	0.2 mg/ml in 1X PBS with 0.1 mg/ml BSA (US sourced) and 0.05% sodium azide	20 ug
V7321SAF-100UG	1 mg/ml in 1X PBS; BSA free, sodium azide free	100 ug
V7321IHC-7ML	Prediluted in 1X PBS with 0.1 mg/ml BSA (US sourced) and 0.05% sodium azide; *For IHC use only*	7 ml

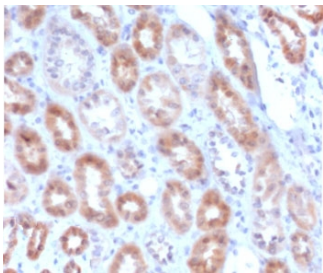
Recombinant RABBIT MONOCLONAL

[Bulk quote request](#)

Availability	1-3 business days
Species Reactivity	Human
Format	Purified
Clonality	Recombinant Rabbit Monoclonal
Isotype	Rabbit IgG, kappa
Clone Name	SMTP-1R
Purity	Protein A affinity chromatography
UniProt	Q13126
Localization	Cytoplasmic
Applications	Western Blot : 1-2ug/ml Immunohistochemistry (FFPE) : 1-2ug/ml for 30 min at RT Prediluted IHC Only Format : incubate for 30 min at RT (1)
Limitations	This recombinant MTAP antibody is available for research use only.



Western blot testing of human HeLa cell lysate with recombinant MTAP antibody (clone SMTP-1R). Expected molecular weight: 26-38 kDa (multiple isoforms).



IHC staining of FFPE human kidney with recombinant MTAP antibody (clone SMTP-1R). Required HIER: steam section in pH 9 10mM Tris with 1mM EDTA for 20 min and allow to cool prior to staining.

Description

Catalyzes the reversible phosphorylation of S-methyl-5'-thioadenosine (MTA) to adenine and 5-methylthioribose-1-phosphate. Involved in the breakdown of MTA, a major by-product of polyamine biosynthesis. Responsible for the first step in the methionine salvage pathway after MTA has been generated from S-adenosylmethionine. Has broad substrate specificity with 6-aminopurine nucleosides as preferred substrates. [UniProt]

Application Notes

The stated application concentrations are suggested starting points. Titration of the recombinant MTAP antibody may be required due to differences in protocols and secondary/substrate sensitivity.

1. The prediluted format is supplied in a dropper bottle and is optimized for use in IHC. After epitope retrieval step (if required), drip mAb solution onto the tissue section and incubate at RT for 30 min.

Immunogen

A portion of amino acids 97-196 from the human protein was used as the immunogen for the recombinant MTAP antibody.

Storage

Store the recombinant MTAP antibody at 2-8°C (with azide) or aliquot and store at -20°C or colder (without azide).