

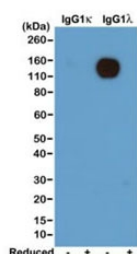
Recombinant Mouse Lambda Light Chain Antibody [clone RM110] (R20161)

| Catalog No. | Formulation | Size |
|--------------|---|--------|
| R20161-100UG | 1 mg/ml in PBS with 50% glycerol, 1% BSA and 0.09% sodium azide | 100 ug |

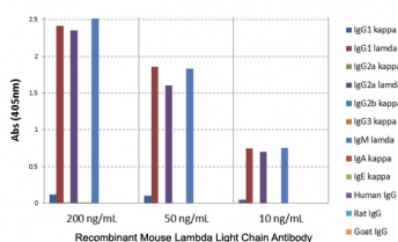
Recombinant **RABBIT MONOCLONAL**

[Bulk quote request](#)

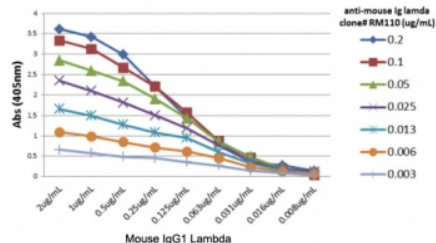
| | |
|--------------------|--|
| Availability | 1-3 business days |
| Species Reactivity | Mouse |
| Format | Purified |
| Clonality | Recombinant Rabbit Monoclonal |
| Isotype | Rabbit IgG |
| Clone Name | RM110 |
| Purity | Protein A purified from animal origin-free supernatant |
| UniProt | P01843 |
| Gene ID | 110785 |
| Applications | ELISA : 0.005-0.2ug/ml Western Blot (non-reduced) : 0.1-0.5ug/ml |
| Limitations | This recombinant Mouse Lambda Light Chain antibody is available for research use only. |



Western blot of nonreduced(-) and reduced(+) mouse IgG1? and IgG1? (20ng/lane), using 0.2ug/ml of recombinant Mouse Lambda Light Chain antibody (clone RM110). This mAb reacts to nonreduced IgG1?.



ELISA of mouse immunoglobulins shows recombinant Mouse Lambda Light Chain antibody reacts to the lambda light chain of mouse immunoglobulins. No cross reactivity with kappa or human/rat/goat IgG.



ELISA titer: the plate was coated with different amounts of mouse IgG1?. A serial dilution of recombinant Mouse Lambda Light Chain antibody was used as the primary. An alkaline phosphatase conjugated anti-rabbit IgG as the secondary.

Description

This recombinant Mouse Lambda Light Chain antibody reacts to the lambda light chain of murine immunoglobulins. No cross reactivity with the kappa chain or human/rat/goat IgG.

Application Notes

The stated application concentrations are suggested starting points. Titration of the recombinant Mouse Lambda Light Chain antibody may be required due to differences in protocols and secondary/substrate sensitivity.

Immunogen

Mouse IgM Lambda was used as the immunogen for this recombinant Mouse Lambda Light Chain antibody.

Storage

Store the recombinant Mouse Lambda Light Chain antibody at -20oC (with glycerol) or aliquot and store at -20oC (without glycerol).