

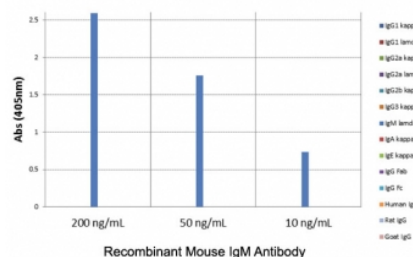
Recombinant Mouse IgM Antibody [clone RM109] (R20170)

Catalog No.	Formulation	Size
R20170-100UG	1 mg/ml in PBS with 50% glycerol, 1% BSA and 0.09% sodium azide	100 ug

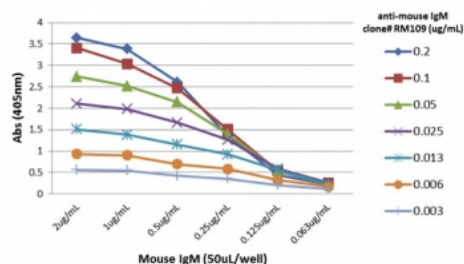
Recombinant **RABBIT MONOCLONAL**

[Bulk quote request](#)

Availability	1-3 business days
Species Reactivity	Mouse
Format	Purified
Clonality	Recombinant Rabbit Monoclonal
Isotype	Rabbit IgG
Clone Name	RM109
Purity	Protein A purified from animal origin-free supernatant
UniProt	P01872
Gene ID	16019
Applications	ELISA : 0.005ug/ml-0.2ug/ml
Limitations	This recombinant Mouse IgM antibody is available for research use only.



ELISA of mouse immunoglobulins shows the recombinant Mouse IgM antibody reacts to mIgM; no cross reactivity with IgG1, IgG2a, IgG2b, IgG3, IgA, IgE, human/rat/goat IgG.



ELISA Titration: the plate was coated with different amounts of mouse IgM. A serial dilution of recombinant Mouse IgM antibody was used as the primary and an alkaline phosphatase conjugated anti-rabbit IgG as the secondary.

Description

This recombinant Mouse IgM antibody reacts to mIgM. No cross reactivity with IgG1, IgG2a, IgG2b, IgG3, IgA, IgE, human/rat/goat IgG.

Application Notes

The stated application concentrations are suggested starting points. Titration of the recombinant Mouse IgM antibody may be required due to differences in protocols and secondary/substrate sensitivity.

Immunogen

Mouse IgM was used as the immunogen for this recombinant Mouse IgM antibody.

Storage

Store the recombinant Mouse IgM antibody at -20oC (with glycerol) or aliquot and store at -20oC (without glycerol).