

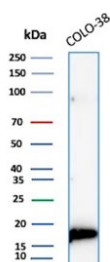
Recombinant MLANA Antibody / Melan-A / MART-1 [clone rMLANA/9404] (V5603)

Catalog No.	Formulation	Size
V5603-100UG	0.2 mg/ml in 1X PBS with 0.1 mg/ml BSA (US sourced), 0.05% sodium azide	100 ug
V5603-20UG	0.2 mg/ml in 1X PBS with 0.1 mg/ml BSA (US sourced), 0.05% sodium azide	20 ug
V5603SAF-100UG	1 mg/ml in 1X PBS; BSA free, sodium azide free	100 ug

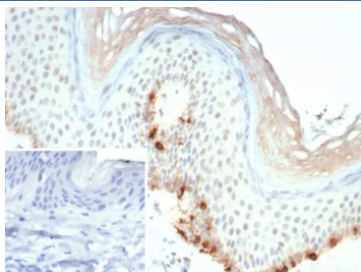
Recombinant MOUSE MONOCLONAL

[Bulk quote request](#)

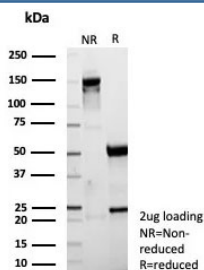
Availability	1-3 business days
Species Reactivity	Human
Format	Purified
Clonality	Recombinant Mouse Monoclonal
Isotype	Mouse IgG1, kappa
Clone Name	rMLANA/9404
Purity	Protein A/G affinity
UniProt	Q16655
Localization	Cytoplasm
Applications	Immunohistochemistry (FFPE) : 1-2ug/ml Western Blot : 2-4ug/ml
Limitations	This recombinant MLANA antibody is available for research use only.



Western blot testing of human COLO-38 cell lysate with recombinant MLANA antibody (clone rMLANA/9404). Expected molecular weight ~20 kDa with possible doublet.



IHC staining of FFPE human skin tissue with recombinant MLANA antibody (clone rMLANA/9404). Inset: PBS used in place of primary Ab (secondary Ab negative control). HIER: boil tissue sections in pH 9 10mM Tris with 1mM EDTA for 20 min and allow to cool before testing.



SDS-PAGE analysis of purified, BSA-free recombinant MLANA antibody (clone rMLANA/9404) as confirmation of integrity and purity.

Description

This antibody recognizes a protein doublet of 20-22kDa, identified as MART-1 (Melanoma Antigen Recognized by T cells 1), MLANA or Melan-A. MART-1/MLANA is a newly identified melanocyte differentiation antigen recognized by autologous cytotoxic T lymphocytes. Seven other melanoma associated antigens recognized by autologous cytotoxic T cells include MAGE-1, MAGE-3, tyrosinase, gp100, gp75, BAGE-1, and GAGE-1. Subcellular fractionation shows that MART-1/MLANA is present in melanosomes and endoplasmic reticulum. This MAb labels melanomas and other tumors showing melanocytic differentiation. It is also a useful positive-marker for angiomyolipomas. It does not stain tumor cells of epithelial, lymphoid, glial, or mesenchymal origin.

Application Notes

Optimal dilution of the recombinant MLANA antibody should be determined by the researcher.

Immunogen

Recombinant full-length human MART-1/Melan-A protein was used as the immunogen for the recombinant MLANA antibody.

Storage

Aliquot the recombinant MLANA antibody and store frozen at -20oC or colder. Avoid repeated freeze-thaw cycles.