

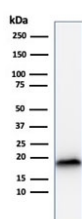
## Recombinant Melan-A Antibody [clone rMLANA/788] (V3717)

Catalog No.	Formulation	Size
V3717-100UG	0.2 mg/ml in 1X PBS with 0.1 mg/ml BSA (US sourced) and 0.05% sodium azide	100 ug
V3717-20UG	0.2 mg/ml in 1X PBS with 0.1 mg/ml BSA (US sourced) and 0.05% sodium azide	20 ug
V3717SAF-100UG	1 mg/ml in 1X PBS; BSA free, sodium azide free	100 ug
V3717IHC-7ML	Prediluted in 1X PBS with 0.1 mg/ml BSA (US sourced) and 0.05% sodium azide; *For IHC use only*	7 ml

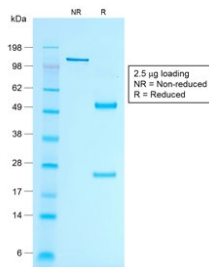
Recombinant **MOUSE MONOCLONAL**

[Bulk quote request](#)

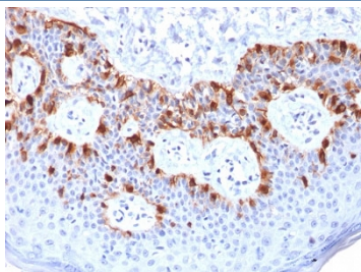
Availability	1-3 business days
Species Reactivity	Human
Format	Purified
Clonality	Recombinant Mouse Monoclonal
Isotype	Mouse IgG1, kappa
Clone Name	rMLANA/788
Purity	Protein G affinity chromatography
UniProt	Q16655
Localization	Cytoplasmic
Applications	Immunohistochemistry (FFPE) : 1-2ug/ml for 30 min at RT Western Blot : 1-2ug/ml
Limitations	This recombinant Melan-A antibody is available for research use only.



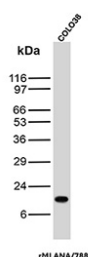
Western blot testing of human COLO-38 cell lysate with recombinant Melan-A antibody (clone rMLANA/788). Expected molecular weight ~20 kDa with possible doublet.



SDS-PAGE analysis of purified, BSA-free recombinant Melan-A antibody (clone rMLANA/788) as confirmation of integrity and purity.



IHC testing of FFPE human melanoma with recombinant Melan-A antibody (clone rMLANA/788). HIER: boil tissue sections in pH 9 10mM Tris with 1mM EDTA for 10-20 min followed by cooling at RT for 20 min.



Western blot testing of human COLO-38 cell lysate with recombinant Melan-A antibody (clone rMLANA/788). Expected molecular weight ~20 kDa with possible doublet.

## Description

This antibody recognizes a protein doublet of 20-22kDa, identified as MART-1 (Melanoma Antigen Recognized by T cells 1) or Melan-A. MART-1 is a newly identified melanocyte differentiation antigen recognized by autologous cytotoxic T lymphocytes. Seven other melanoma associated antigens recognized by autologous cytotoxic T cells include MAGE-1, MAGE-3, tyrosinase, gp100, gp75, BAGE-1, and GAGE-1. Subcellular fractionation shows that MART-1 is present in melanosomes and endoplasmic reticulum. This mAb labels melanomas and other tumors showing melanocytic differentiation. It is also a useful positive-marker for angiomyolipomas. It does not stain tumor cells of epithelial, lymphoid, glial, or mesenchymal origin.

## Application Notes

Optimal dilution of the recombinant Melan-A antibody should be determined by the researcher.

1. The prediluted format is supplied in a dropper bottle and is optimized for use in IHC. After epitope retrieval step (if required), drip mAb solution onto the tissue section and incubate at RT for 30 min.

## Immunogen

Recombinant human MLANA protein was used as the immunogen for the recombinant Melan-A antibody.

## Storage

Store the recombinant Melan-A antibody at 2-8°C (with azide) or aliquot and store at -20°C or colder (without azide).

